



Crime and Disorder Scrutiny Panel

Wed 25 Sep
2019
6.30 pm

Committee Room Two
Town Hall
Redditch



www.redditchbc.gov.uk

**If you have any queries on this Agenda please contact
Jess Bayley**

Town Hall, Walter Stranz Square, Redditch, B98 8AH

Tel: (01527) 64252 (Ext. 3268)

e.mail: jess.bayley@bromsgroveandredditch.gov.uk



Crime and Disorder Scrutiny

Wednesday, 25th September,
2019

6.30 pm

Committee Room 2 - Town Hall
Redditch

Panel

Agenda

Membership:

| | | |
|--------|--------------------------|----------------|
| Cllrs: | Jennifer Wheeler (Chair) | Nyear Nazir |
| | Pattie Hill (Chair) | Gareth Prosser |
| | Wanda King | |

1. Apologies and named substitutes

2. Declarations of interest and of Party Whip

To invite Councillors to declare any Disclosable Pecuniary Interests and / or Other Disclosable Interests they may have in items on the agenda, and to confirm the nature of those interests, and any Party Whip.

3. Minutes (Pages 1 - 8)

4. North Worcestershire Community Safety Partnership - Update on Work in Redditch (Pages 9 - 58)

5. Anti-Social Behaviour - Update on the work of the Partnership (Pages 59 - 72)

6. Exclusion of the Press and Public

Should it be necessary, in the opinion of the Borough Director, during the course of the meeting to consider excluding the public from the meeting on the grounds that exempt information is likely to be divulged, it may be necessary to move the following resolution:

“That, under S.100 (A) (4) of the Local Government Act 1972, the public be excluded from the meeting for the following matter(s) on the grounds that it/they involve(s) the likely disclosure of exempt information as defined in the relevant paragraphs (to be specified) of Part 1 of Schedule 12 (A) of the said Act”.

These paragraphs are as follows:

Subject to the “public interest” test, information relating to:

- Para 7 – the prevention, investigation or prosecution of crime; and may need to be considered as ‘exempt’.

This page is intentionally left blank



Crime and Disorder Scrutiny Panel

Wednesday, 26 September
2018

MINUTES

Present:

Councillor Pattie Hill (Chair), and Councillors Julian Grubb,
Gemma Monaco and Jennifer Wheeler

Officers:

Bev Houghton

Democratic Services Officer:

Jess Bayley

1. APOLOGIES AND NAMED SUBSTITUTES

An apology for absence was received on behalf of Councillor
Debbie Chance.

2. DECLARATIONS OF INTEREST AND OF PARTY WHIP

There were no declarations of interest nor of any party whip.

3. MINUTES OF PREVIOUS MEETING

RESOLVED that

**the minutes of the meeting of the Crime and Disorder Scrutiny
Panel held on 27th September 2017 be approved as a correct
record and signed by the Chair.**

4. NORTH WORCESTERSHIRE COMMUNITY SAFETY PARTNERSHIP - UPDATE REPORT

The Community Safety Manager presented the latest update from
the North Worcestershire Community Safety Partnership and in so
doing highlighted the following:

.....
Chair

Crime and Disorder

Scrutiny

Panel

Wednesday, 26 September 2018

- The partnership had responsibility for the three districts in north Worcestershire including the Borough of Redditch.
- The Council was involved in holding the Police and Crime Commissioner (PCC) for the West Mercia Police force to account, via the Portfolio Holder for Community Safety and Regulatory Services' participation in meetings of the West Mercia Police and Crime Panel.
- Since the previous meeting of the panel a new sub-group of the partnership, the North Worcestershire Serious Organised Crime Joint Action Group (SOCJAG), had been introduced.
- There were also a number of operational sub-groups. The Blue Light Group had only been established very recently and was part of a county wide initiative that had been trialled in Worcester to tackle the issue of street drinking.
- Members were advised that the Partnership Plan 2017 – 20 was in the second year of implementation and all of the projects that were delivered by the Partnership linked to their priorities.
- The partnership also received funding from the PCC which had to be spent on specific projects matching his priorities.
- The PCC was not a member of the partnership but had a duty to work closely with all the community safety partnerships in the areas he served.
- The partnership had been allocated funding of £200,000 to spend on local CCTV schemes and a report about this would be presented for Members' consideration in due course.
- Officers were aiming to upgrade the CCTV suite and to move to digital systems like the Police control room.
- There was one lead Community Safety Project Officer for Redditch.
- The Safer Redditch Group had provided funding for a project to tackle youth anti-social behaviour (ASB) in Matchborough. Community groups such as Redditch Boxing Club had provided assistance with this.
- The nominated neighbour scheme was very successful with 80 residents signed up. It was designed to tackle rogue traders and was a scheme that had been piloted in Redditch and Bromsgrove at the request of the PCC.
- Problems with ASB in Smallwood had been reported by residents and Councillor Debbie Chance at PACT meetings. Investigations had found drugs paraphernalia, including discarded needles. The Environmental Services team were disposing of used needles safely and looking for patterns in behaviour.
- The Community Safety Partnership was working with Swanswell on a local pharmacy incentive scheme for drug

Crime and Disorder

Scrutiny

Panel

Wednesday, 26 September 2018

addicts. These involved offering a voucher for every five used needles that were returned safely to the pharmacy which then had to be exchanged for clean needles.

- Redditch Pub Watch continued to meet, with the latest meeting having been attended by representatives of 18 organisations. Participants could share information about those who had been thrown out of a public house or of those suspected of committing crimes such as theft.
- A project to tackle ASB in Abbeydale had taken place in March and April 2018 based on concerns reported by a resident. There had been positive feedback from the local community about this project.
- Following a meeting between Councillors, the Police and residents in a local park, action had been taken to tackle ASB in Astwood Bank with a positive outcome.
- The Community Safety Team had worked with the housing Locality Teams over the summer to tackle ASB involving Council tenants.
- The team also took part in the Young Citizens Challenge every year, with children visiting the fire station and learning about issues such as fire and water safety.
- The Safer Places Scheme, which provided a safe place in public buildings to those with learning disabilities, continued to be supported in the Borough.
- Hate Crime Awareness Week had been relaunched in 2017 with a range of events.
- The Hate Crime Awareness Week in 2018 would take place on 19th October. Some celebrities would be attending to raise awareness of hate crime whilst Frank Bruno had donated boxing gloves which would feature in the week's events.
- Later in the year there would be 16 days of action as part of the White Ribbon Campaign to help raise awareness of domestic abuse. Professionals would be provided with training to help them identify the signs that might indicate that a person was being abused.
- A youth event was due to take place on 16th December. During this event a survivor of the Rotherham child sexual exploitation case would talk to young people at risk of exploitation about her experiences.
- The Community Safety Partnership undertook evaluations and performance monitoring of every project in line with the PCC's requirements.

Following the presentation Members discussed a number of points in detail:

Crime and Disorder

Scrutiny

Panel

Wednesday, 26 September 2018

- The action that should be taken to initiate PACT meetings in local communities. Members were advised that generally the police organised the meetings, though partners worked together at the meetings.
- The changing nature of PACT meetings, which were moving away from a traditional Committee meeting structure to more flexible gatherings that met the needs of local communities.
- The support provided by the Council to PACT meetings. Members were advised that Officers attended PACT meetings where relevant. Significant support was also provided by the elected Members who attended these meetings.
- The difficulty for Members that could arise when PACT meetings were booked to take place on the same evening as the Council's Committee meetings which were booked months in advance.
- The potential for a PACT meeting to be arranged for residents living in Abbeydale.
- The extent to which the partnership advertised the Nominated Neighbour Scheme. Members were advised that there were leaflets which Members could distribute and staff in the Housing Service, Police and the fire service had received training in respect of this matter. However, due to limited resources it had not been further promoted.

RESOLVED that

the report be noted.

5. CHILD SEXUAL EXPLOITATION

The Community Safety Manager delivered a very detailed presentation in respect of Child Sexual Exploitation (CSE) and in so doing highlighted the following:

- CSE could involve gangs or individuals sexually exploiting children.
- Contrary to popular myth boys could be just as vulnerable to CSE as girls, but were less likely to report the issue and more likely to be criminalised.
- CSE was happening in nearly every town and city in the country.
- There had been some cases of CSE in Redditch, including one where the perpetrator had been sentenced to eight years in prison.
- It was often assumed that those from migrant communities would be trafficked but young people from all backgrounds could be trafficked across local authority boundaries.

Crime and Disorder

Scrutiny

Panel

Wednesday, 26 September 2018

- Frequently children would view their initial contact with their perpetrators as being exciting.
- Sometimes children would not recognise that they were being abused but would think that they were in a relationship with an adult.
- Where family breakdowns occurred children were often at increased risk of CSE, with some searching for a father figure.
- Children who had been victims of bullying were also at an increased risk of CSE as they would welcome the initial attention from what might appear to be a friendly adult.
- There had been a lot of cases in the national press of perpetrators targeting looked after children, including those in foster care, as they were particularly vulnerable and viewed as being easier to entice.
- The Community Safety Partnership had been advised that anywhere where children and young people gathered was a high risk location for CSE.
- There were a number of risk factors which could indicate that a child was the victim of CSE, or at risk of exploitation. This included a child mentioning the name of an adult not previously referenced in conversation, increased visits to sexual health services and teenage pregnancy.
- The sexual health service team monitored those using their services and this could help staff to identify children and young people who were potentially at risk.
- Regular meetings were held at the safeguarding hub in Worcestershire to help target and support those children at greatest risk of exploitation.
- SOCJAG focused on CSE as part of its remit in relation to serious organised crime. A key part of their approach was to protect, prepare, preview and prevent CSE.
- Where there was a suspicion that CSE was occurring but there was no evidence to support an arrest, disruption of group gatherings was important to help prevent exploitation.
- The Community Safety Partnership commissioned mentors to help support those children at risk of CSE.
- The Local Government Association had produced a resource pack for elected Councillors to help them recognise the signs of CSE.
- Workers in the public sector had been advised by the government to be careful about the language that they used. For example it was important to recognise that children were being coerced into CSE; they were not in relationships.

Members subsequently discussed the following points relating to CSE:

Crime and Disorder

Scrutiny

Panel

Wednesday, 26 September 2018

- The process that was followed when children did not attend school and whether data protection rules created barriers to reporting concerns about truancy to the relevant authorities. Members were advised that data protection rules should not prevent schools from raising concerns about persistent truants and consent was not always needed, particularly in cases where there was a risk of CSE.
- The arrangements in schools to identify those at risk of CSE. Members noted that many schools, including academy schools, employed Education Enforcement Officers who picked up on issues such as truancy.
- The progress achieved over the last ten years in terms of raising awareness of the risk of CSE, with increasing recognition that CSE could occur anywhere.
- The fact that perpetrators could come from any background and the need to avoid stereotyping the type of person or groups of people who would commit this crime.
- The safeguarding lead for the Council. Members were advised that the Head of Community Services was the lead Safeguarding Officer. In her absence the Head of Leisure and Cultural Services could be contacted and in their absence the Children's Centre Manager.

Members concluded by noting that the Local Government Association's resource pack in relation to tackling CSE would be helpful for all Councillors. Therefore it was agreed that a copy should be circulated for the consideration of all Members.

RESOLVED that

- 1) **the Local Government Association's 'Tackling Child Sexual Exploitation: A Resource Pack for Councils' should be circulated for the consideration of every member of the Council; and**
- 2) **the report be noted.**

6. ANTI-SOCIAL BEHAVIOUR DATA

The Chair opened this item by explaining that the Overview and Scrutiny Committee had requested that the Crime and Disorder Scrutiny Panel should receive a report about ASB in the Borough. This item would help Members to ascertain whether further investigation of ASB was needed.

Crime and Disorder

Scrutiny

Panel

Wednesday, 26 September 2018

The Community Safety Manager subsequently delivered a presentation for Members' consideration:

- Statutory guidance had been issued in December 2017 in relation to the provisions within the Anti Social Behaviour Police and Crime Act 2014.
- The Home Office had provided three definitions of ASB in the guidance; the first related to ASB against an individual, the second related to ASB in relation to housing and the third related to ASB in a public place.
- The government had recognised the need for different ASB incidents to be appropriately recorded, primarily in response to the case of Fiona Pilkington. Ms Pilkington had been harassed to the extent that she had committed suicide and killed her daughter who had disabilities and it had been found that whilst she had reported incidents to the police these had not been linked.
- Councils could apply for a court order in relation to ASB but would need to provide evidence in order to be successful.
- The community Safety team received data from the West Mercia Police analyst group which was based in Worcester.
- The data provided by the police clarified that ASB occurred in seasonable patterns. This tended to peak at around Halloween but was lower in the spring and summer months.
- Whilst people often assumed that ASB in the community was getting worse the data indicated that the levels and patterns in behaviour remained similar every year.
- The data in terms of ASB per ward helped to identify area where ASB was more prevalent in the Borough.
- Members were asked to note that the Abbey ward could be expected to have higher rates of ASB as the town centre was located within the ward. ASB incidents on Unicorn Hill and in the Market Place tended to be quite high.
- ASB was not distributed evenly across wards. In each ward there could be a particular area where ASB was more likely to occur. For example in Greenlands ward this was more likely to occur in parts of Woodrow.
- All of the district centres in Redditch featured in the areas where ASB was most likely to be reported.
- The level of ASB in Redditch was less than in Wyre Forest District but more than in Bromsgrove District.
- The Community Safety team had access to a small fund which could be used to support local targeted activities that could help to tackle issues such as ASB.
- The team had helped to secure derelict buildings, including former public houses.

Crime and Disorder

Scrutiny

Panel

Wednesday, 26 September 2018

- The Gate Order relating to the gate that had been installed in 2012 on a footpath in Crabbs Cross to address ASB at that location was now permanently open and no reports had been received of ASB.

RESOLVED that

the report be noted.

7. ANTI-SOCIAL BEHAVIOUR CRIME AND POLICING ACT 2014 - IMPLEMENTATION OF PROVISIONS - IMPLICATIONS FOR THE CRIME AND DISORDER SCRUTINY PANEL

Members noted that at a meeting of the Executive Committee on 11th September a report in respect of implementing the provisions in the Anti-Social Behaviour Crime and Policing Act 2014 had been considered. During consideration of this item it was proposed that the Crime and Disorder Scrutiny Panel should receive monitoring update reports every six months in respect of the implementation of the provisions, including use of officer delegated powers as well as updates on Public Safety Protection Orders. This proposal was agreed by Council on 17th September 2018.

The first such update would be provided for Members' consideration at the next meeting of the Panel on 27th March 2018. The Chair proposed that once this monitoring arrangement had been in place for 12 months the Panel should review the process to assess how effectively it was working.

The Meeting commenced at 6.30 pm
and closed at 7.50 pm



Elected Member

BRIEFING NOTE

To: Crime and Disorder Scrutiny Panel From: Bev Houghton
Service Area: Community Safety
Contact Info: 01527 534187

CC: Cllr Julian Grubb – Portfolio Holder for Community Services & Regulatory Services
Sue Hanley – Deputy Chief Executive & Chair of NWCSP
Judith Willis – Head of Community & Housing Services

North Worcestershire Community Safety Partnership 2018 & 2019

1. Summary

1.1 This report provides an update on the progress of the North Worcestershire Community Safety Partnership (NWCSP) during 2018/19 and to date.

2. Background

2.1 NWCSP has been in existence since May 2013, following a merger of the three district CSPs in Bromsgrove, Redditch and Wyre Forest. The community safety teams that support and administer the Partnership continue to sit within the respective local authorities.

2.2 Local representation on NWCSP is fulfilled through a number of positions. Redditch Borough Council's Elected Member representative is the Portfolio Holder for Community Services & Regulatory Services, Councillor Julian Grubb. Sue Hanley, the Council's Deputy Chief Executive is Chair of NWCSP and is also Redditch Borough Council's Responsible Authority representative on the Partnership. The Council's Community Safety Manager, Bev Houghton provides support to NWCSP.

2.3 Scrutiny arrangements for the CSP remain unchanged with local authorities having a statutory duty to scrutinise the work of its local CSP, under Section 19 of the Police and Justice Act 2006.

2.4 Alongside the relationship the Council has with the CSP, there is also a direct role in holding the West Mercia Police and Crime Commissioner (PCC) to account through the West Mercia Police and Crime Panel (PCP). Redditch Borough Council's representative on the PCP is the Portfolio Holder for Community Services & Regulatory Services, Councillor Julian Grubb

3. Current Position

3.1 Partnership Structure

CSP district operational groups are identified as Safer District Groups and are known as Safer Bromsgrove Group, Safer Redditch Group and Safer Wyre Forest Group. There are also a number of other sub-groups as illustrated in Appendix 1.

The Safer Redditch Meeting is currently under review due to a reduction in officer support and the development of a wider ASB and Complex Cases Group which will provide an improved process for problem solving and tasking actions to address many local community safety issues. Also, the development of a Multi-Agency Targeted Enforcement (MATE) Group, piloted in Redditch in early 2018, has resolved a number of issues that would previously have been referred to the Safer Redditch Group. A review of the terms of reference, officer requirements and aims and objectives of the Safer Redditch meeting is under way, to ensure there is no duplication of activity with other forums and that the best use of resources is made when addressing local issues.

3.2 The Partnership Plan 2017-20

NWCSP has a statutory duty to produce a three year rolling plan outlining how the Partnership intends to address key crime and community safety priorities, as identified through its annual Strategic Assessment.

The Strategic Assessment gathers research, evidence and intelligence from national and regional sources, as well as drawing on professional expertise of those working locally. It is designed to be a point of reference and guidance to resource community safety initiatives among partner agencies across the area.

The Strategic Assessment is used to inform the Community Safety Partnership Plan and the priorities that the CSP will focus on for a 3 year period. The partnership agreed its priorities for 2017-20 in Dec 2016 and they are:-

- I. Reducing Violence and Abuse: including sexual offending, domestic abuse and Child Sexual Exploitation (CSE)
- II. Reducing Theft and Acquisitive crime: including shoplifting, thefts and burglaries
- III. Reducing Anti-Social Behaviour, Damage and Nuisance: including criminal damage, environmental issues and deliberate fires/arson
- IV. Protecting vulnerable communities: including reducing harassment and threatening behaviour motivated by Hate
- V. Reducing Offending and Reducing the Harm caused by Drug and Alcohol Misuse are cross cutting themes which impact on all priorities

The 2019 Strategic Assessment is currently being produced by the CSP Analyst team based at West Mercia Police HQ. This statutory document is due to be presented to the Partnership in September 2019 and its findings will be used to develop NWCSP's new three-year Partnership Plan for 2020/23.

3.3 John Campion, West Mercia Police and Crime Commissioner

John Campion was elected as the Police and Crime Commissioner for West Mercia on 5th May 2016. The PCC has a duty to co-operate with CSPs in his geographical area to reduce crime and disorder and there is a reciprocal duty on CSPs to collaborate with the PCC. The PCC and the CSP must have regard to each other's priorities within their respective plans. The PCC's Safer West Mercia Plan was published in October 2016 and his priorities are reflected in the NWCSP Action Plans, which the partnership will contribute to delivering at a local level. The PCC's vision is focused on four key areas:

- I. Building a More Secure West Mercia: CSE, domestic abuse, vulnerable people, sexual offences, ASB, drugs and alcohol, reducing reoffending, road safety
- II. Reassuring West Mercia's Communities: feeling safe as well as being safe, engaging with the public, protecting from cyber-crime, making voices heard around rural crime
- III. Putting Victims and Witnesses First
- IV. Reforming West Mercia

Tracey Onslow is the Deputy Police and Crime Commissioner, appointed in July 2016. Her role is to represent the PCC in communities across West Mercia. Her portfolio includes cyber, rural and business crime, victims' services and commissioning. CSPs will be working closely with the Deputy PCC as the PCCs commissioning model continues to develop. The first commissioning areas to be considered by the Deputy PCC were CCTV Upgrades and CSP funding for Data Analysis support. Both reviews have been completed and substantial funding has been provided to deliver in both of these key Community Safety areas.

Data Analyst Support - The PCC has taken CSP analytical support directly into the Office of the PCC using a proportion of the ring-fenced funding from each of the West Mercia CSPs plus some additional PCC funding. There is now a team of 3 CSP analyst posts that deliver data and information products for all of the West Mercia CSPs. This includes products such as regular CSP Crime and Data Overviews, Serious & Organised Crime Profiles and the annual Statutory Strategic Assessments.

CCTV Upgrade - In 2017-18 NWCSP was allocated £195,000 of PCC funding over a 3 year period for improvements to the area's CCTV scheme. On behalf of the three Local Authorities, the CSP developed a proposal to use this capital contribution to modernise the CCTV infrastructure that serves the three district areas. The plans will see an upgrade of the current scheme to support

to Internet Protocol Recording and will therefore upgrade the technological capabilities of the current scheme to digital processing. This will greatly increase the current CCTV scheme, including enhanced digital capability, improved image quality and greater capacity to expand the scheme and/or link to other digital systems across the region.

In March 2018, NWCSP agreed to allocate a proportion of its ring-fenced revenue grant from the PCC to the project, as the CCTV grant is separate to NWCSP's core funding allocation. Then, January 2019 the PCC provided an additional £50,000 of capital CCTV funding to each CSP in West Mercia.

Given the amounts involved, this project is the most ambitious undertaken by the Partnership and the project is also being match funded by the three District Councils with additional revenue, capital and in-kind contributions being provided to support the project. The total amount of NWCSP funding allocated to the project is £339,000 and work has now begun to implement the scheme upgrade. A technical consultant has been commissioned to design the specification for the upgraded scheme and the tender for the installation and maintenance contract will shortly be published on a national procurement framework. The project has challenging timescales as the NWCSP funding has to be spent by 31st March 2020; however, the Project Management Team is confident that all milestones will be achieved and the project successfully completed on time.

3.4 Grant Funding from the PCC 2018/19

Throughout 2018, NWCSP allocated its core-funding received from the PCC to various projects and activities across the three district areas. The amount of funding provided to the CSP is based on previous year's allocations and the table below shows the projects currently being supported by NWCSP.

| Project | Funding Amount |
|--|----------------|
| North Worcs CSP Contribution to the West Mercia Analyst Team | £20,000 |
| Redditch & Bromsgrove Schools Respect Programme | £28,125 |
| Wyre Forest Keeping Safe Project | £48,125 |
| North Worcs Street Pastors Schemes | £7,333 |
| North Worcs Young Citizens Challenge 2019 | £1,000 |
| North Worcs CCTV Scheme Upgrade (CSP Revenue) | £94,000 |
| North Worcs CCTV Scheme Upgrade (PCC Capital) | £245,000 |

The progress of the grant funded projects is reported quarterly to the PCC and at the end of the financial year there is a requirement to provide a comprehensive evaluation of all funded projects. This includes a breakdown of project expenditure and the outputs/outcomes achieved. NWCSP project evaluations returns for 18/19 can be shared with Members on request.

3.5 Local Delivery, Key Projects and Progress

Local delivery of community safety projects and initiatives falls under the remit of the Community Safety Operational Groups and whilst the Safer Redditch Group has been on hold; the Council's Community Safety Team has continued to monitor and respond to district community safety issues, co-ordinating local operational delivery with partners. The team is a first point of contact for residents and partners with concerns about local crime and community safety issues and officers are able to call upon other community safety partners when local concerns require a multi-agency response.

The report will now provide an update on some of the key community safety project activity that took place in 2018/19.

Redditch Community Safety Project Officer (CSPO)

Safer Redditch has previously invested some of its historical funding in providing a dedicated officer to deliver community safety projects and initiatives. Richard Waterhouse has been in post since March 2017 and as Project Officer liaises with residents, local communities and other groups around crime prevention and personal safety issues.

MARAC - Multi-Agency Risk Assessment Conference

The CSPO attends the local MARAC which is a nationally recognised process for managing high risk Domestic Abuse cases. Vulnerable residents assessed as being at risk of serious harm or murder by an intimate partner or family member are referred into MARAC for the purpose of coordinating safeguarding activity by all organisations that can offer support and assistance. Richard has attended 24 MARACs in the year and has assisted in protecting 104 vulnerable and high risk victims of domestic violence across Redditch. Richard is Redditch Borough Council's single point of contact for the MARAC process as it is nationally recognised best practice for each agency to have a designated MARAC officer.

The CSPO's role is to ensure that all Council departments are aware of who is subject to MARAC and that they are flagged on all departmental systems, with advice on who to contact with any concerns or information. This provides maximum opportunities to safeguard those residents at high risk of harm; for example, when a female resident subject to MARAC contacted the repairs and maintenance team to request a repair to a front door lock it was discovered that the lock had in fact been damaged in an attempt by her abuser to gain access to the property. The victim had not reported this incident to Police but with consent, this information was shared with officers who were then able to take action against the offender. As part of the process, Richard has visited various service areas to delivered presentations about signs of Domestic Abuse, the MARAC process and the important role the local authority has in protecting residents.

Home Security Assessments

57 Home security assessments have been carried out at the properties of vulnerable residents with many properties receiving upgrades and improvements to the security of their properties. Some assessments have

been made as a result of MARAC discussions however others are carried out at the request of other partners and service areas including the Police and Housing Locality.

Problem Solving and Community Safety Assistance

The team receives a number of calls for advice and assistance from other service areas within the authority and a wide range of partner agencies that require expertise in crime problem solving or community safety advice to assist in resolving complex cases or issues.

Nominated Neighbour Scheme

The Nominated Neighbour scheme, which aims protecting vulnerable residents from door step crime and rouge trader offences, continues to be a successful local initiative. Over 90 Redditch residents have signed up to the scheme to date and initial evaluation monitoring suggests that not a single resident has had a cold caller after joining the scheme. The scheme is currently operating in Redditch and Bromsgrove but it is anticipated that it will be rolled out across the West Mercia Police area in the near future, featuring as part of their Economic Crime Unit's Prevention Strategy.

The Nominated Neighbour information pack is given to all scheme members and it has been further enhanced with the introduction of a Checktrade leaflet, which provides a list of vetted trades that are local to Redditch. This is particularly important to our most vulnerable residents who often do not have access to the internet but require work to be carried out by a trusted tradesperson. Checktrade has also agreed to provide the Community Safety with refreshed leaflets for the scheme, each time they are updated.

The CSPO has been delivering presentations about the scheme and general personal safety to various groups that support vulnerable adults across Redditch. He has also visited every bank and building society in Redditch and liaised with the Managers, all of whom have agreed to promote the scheme when appropriate within their respective branches. Training in how to sign someone up to the scheme has also been provided to Police Community Support Officers and Housing Locality Officers who are all now able to promote the scheme in the course of their day to day duties.

Town Centre and Smallwood Area - Community Safety Concerns

The CSPO is working on a number of initiatives within the Town Centre and in the Smallwood area, predominately relating to street drinking and associated ASB, aggressive begging, discarded hypodermic needles and theft from shops.

Multiple agencies are involved in addressing these issues and as the Project Officer; Richard has a co-ordinating role in consulting and liaising with local residents, partner agencies and local businesses. The crime problem solving model SARA is being used to tackle these issues and a variety of evidence is currently being gathered and assessed to develop longer term responses. With regards to the discarded needles, the Environmental Services team are currently mapping locations where needles are removed to identify any patterns and trends. Also, Richard has liaised with Swanswell Drug and

Alcohol Service and local Pharmacy's to help implement an incentive scheme to stop the discarding of used needles. A pilot project around this issue saw a 60% reduction in the number of needles that were removed by cleansing teams.

The CSPO has also carried out extensive on-street consultations with members of the public, business and market traders in Redditch Town centre and has assisted in identifying areas within the town centre that require action by various private landowners and businesses to prevent and deter acts of antisocial behaviour.

This is an ongoing project that will involve the use of various tools and powers across the partner agencies to ensure that appropriate action is taken as quickly as possible. All responsible parties are to be advised that failure to take action to reduce anti-social behaviour and improve the safety of residents and visitors to the town could lead to formal enforcement action and even prosecution, if necessary.

Community Trigger/ASB Case Review

The Community Trigger/ASB Case Review is a process that was introduced within the ASB Crime and Policing Act 2014 and provides a facility for victims of ASB to request a review of their reported case, if they feel that nothing has been done. Agencies have to come together to review their responses to the reported problem and identify if there is any further action that can be taken.

The process is owned by the Community Safety Partnership and is administered by the Community Safety Team. This year, the team has 5 Trigger applications for the following issues:-

- Multiple applications from residents regarding a disruptive neighbour.
- Neighbour dispute between owner occupier and private rental tenant
- Neighbour complaint regarding cannabis smells and anti-social behaviour from property next door
- Resident complaint of motorbikes/quadbikes racing across footpaths on the estate
- Multiple applications from a group of residents regarding the anti-social behaviour of the same neighbour.

One community trigger is still underway and four have been concluded with a number of actions identified and agreed to try and resolve the residents' concerns. A variety of partner agencies have been involved in the case reviews, including the Police, local Housing Associations, Private Sector Housing, NHS Community Mental Health team and Adult Social Care.

The Community Trigger/ASB Case review process as laid out in the act has a number of timescales that need to be met to ensure that applicants receive timely responses to their concerns and, as such, the Community Safety Partnership will be undertaking a review of the process to ensure that all of the requirements of the act are being implemented and the scheme is fit for purpose.

Brockhill Park and Play Area

The CSPO was contacted by local residents regarding suspicious activity and ASB at a park in Brockhill. Richard has been working with community members in the area and the Police regarding concerns of suspected drug dealing, in and around a fenced sports area and intelligence gathered suggested that the suspects were travelling into the town from Birmingham. Indeed, whilst carrying out a site survey, the Project officer himself was approached and offered drugs. This, and information provided anonymously by local residents, was shared with the Police for further investigation and patrols in the area were increased. The Council's Environmental Services team also attend the area on a regular basis to ensure the park is kept clear of litter and graffiti and to provide additional general supervision of the area. This is an ongoing project that is being monitored and reviewed on a regular basis.

Glover Street Park and Play Area

The CSPO was contacted by concerned residents and Ward Members regarding anti-social behaviour taking place at this location, often late at night and into the early hours of the morning. Young adults playing football in the evening were regularly accessing residents' rear gardens to retrieve balls, climbing through a damaged fence. Repairs to this fence have been arranged and an elevated net has been attached to one end of the fenced play area to prevent balls from leaving the court area. Also, lighting in the park area has been turned off during the summer months to prevent football being played into the early hours of the morning. Again, this is an ongoing project that is subject to regular monitoring and review.

Redditch Pub Watch Scheme

The CSPO has continued to work with the Town Centre Manager to expand and improve the Pub Watch scheme in Redditch. The scheme brings licensed premises across the town together to work towards reducing incidents of violence and anti-social behaviour in the night time economy and to promote Redditch as a safe place to visit and socialise. An effective means of information sharing between Pub Watch members is being established in the form of an online, secure information app called 'Disc'. This is being used successfully in other areas across the country and it allows members to share relevant information about offenders, known concerns and potential disorder, quickly and securely via the GDPR compliant app. The licenses for the app have been funded by Safer Redditch and there is also a plan to link this scheme to retail outlets within the town centre with the aim of reducing shoplifting offences.

Redditch & Bromsgrove Schools Respect Programme

The Respect programme continues to be successful in providing whole day community safety awareness sessions as part of school PHSE drop down days. The programme also provides bespoke classroom sessions on a number of subjects such as recognising and reporting hate crime, understanding healthy relationships/domestic abuse, the dangers of substance misuse and promoting respect and community responsibility. The Respect Programme also provides one to one therapeutic mentoring sessions to individual students who are felt to be at risk of becoming involved in crime and ASB or are at risk of becoming victims of crime.

In the last school year (Sept 18 to July 19), the project saw 334 students receive community safety information during school PHSE lessons and drop down days across Redditch and Bromsgrove. The programme received 187 referrals for 1 to 1 support through the therapeutic mentoring sessions and 39 students received information via targeted small group workshop sessions.

Young Citizens Challenge

The Young Citizen's Challenge is an initiative that has been running in Redditch and Bromsgrove for over 10 years. The project provides community safety and personal safety messages and information to Year 6 pupils from middle schools across both districts. Students, accompanied by their teacher, are taken to a partner location to take part in a range of interactive workshops and activities, raising awareness of various community safety issues.

Young Citizen's Challenge 2019 took place in May and the project was delivered from Bromsgrove Police and Fire Station with 770 young people receiving a variety of community safety messages. Redditch schools that took part in the initiative were Woodfield Middle School, St Bede's Middle School, Birchensale Middle School, Churchill Middle School and Ridgeway Academy.

Evaluations received from the schools state that it was a valuable learning experience for the students. Workshops were described as informative, well organised and enjoyable with vital life skills areas covered and presented on the right level and in clear and interactive way.

Safe Place Scheme

The Safe Place Scheme is a CSP supported scheme that was set up by Our Way Self Advocacy in Wyre Forest in 2014. The scheme is now operating across Worcestershire and it offers vulnerable people a safe place to go if they have a problem or concern when out and about in the town centres. All Safe Places are identified by a Safe Place sticker and the organisations employees receive training, so that they are able to give reassurance and help people contact appropriate support, if needed.

A directory of the Safe Places in Redditch and across the county is available at <https://www.ourway.org.uk/our-way-projects/safe-place-scheme/> and there is also a free Safe Place Scheme app available for mobile phones. Downloads of "My Town Worcestershire" from the App Store, will show you your nearest "Safe Place" and can guide you to it via Google Maps.

Community Safety teams in Worcestershire work in partnership with West Mercia Police and Our Way Self Advocacy to support, develop and maintain the scheme across the county.

Hate Crime Awareness Week

As part of national Hate Crime Awareness Week in October 2018, North Worcestershire Hate Incident Partnership organised a joint event for professionals and community members across the three districts. Community Safety teams managed to secure some high profile guest speakers to attend the hate crime conference including businesswoman and "The Apprentice" 2017 candidate Bushra Shaikh and Paralympic Gold Medallist Claire

Cashmore MBE. Both speakers shared their experiences of hate crime and how they were able to overcome the barriers.

Over hundred professionals and members of the public attended and felt that the conference was powerful and informative.

The conference and work of the partnership was recognised at the National British Muslim Awards in February 2019 where Nadia Rashid, Chair of North Worcestershire Hate Incident Partnership won the prestigious 'Muslim in the Community Award'.

Also during the national awareness week, Hate Crime awareness assemblies were delivered in schools across North Worcestershire and various printed materials were given out to students. The North Worcs Hate Crime Awareness Twitter campaign for the month of October reached 18,184 tweets by its conclusions.

White Ribbon Campaign

As a part of the international White Ribbon Campaign and its '16 Days of Action', Community Safety teams jointly with Woman's Aid organised two events. The campaign aimed to increase recognition of domestic abuse and encourage and support people affected by it to seek the support that's available.

An event for professionals was held at Parkside on 30th November 2018, focusing on promoting the many support services available for victims of domestic abuse. Over 100 people attended and felt the event was informative and successful.

An event, specifically for young people was held on 6th December 2018 at Parkside in Bromsgrove and focused on the impact of domestic abuse and Children Sexual Exploitation (CSE) on young people. The event was used to inform at risk young people, identified by schools across North Worcestershire about grooming, the signs of sexual exploitation and who to turn to for help, in a sensitive and safe environment. It was extremely impactful and some disclosures were made by young people at the event which enabled them to get individual support from the professionals at the event.

Community Engagement

Alongside statutory partners, the Community Safety Team has worked with a number of local residents and community groups to offer guidance and information on a variety of community safety concerns. This activity included attending a wide range of forums such as neighbourhood watches, residents' association meetings, school/student events and specific health groups such as Dementia Awareness groups and Carers Support groups. After attendance at these events, follow-up home and business security surveys have been conducted, providing bespoke crime prevention advice to vulnerable people.

The Community Safety Team regularly responds to calls from residents raising concerns about aspects of crime, ASB and community safety issues in

their local area. The team offers crime prevention advice, facilitates contact with other agencies and provides community safety support as necessary.

3.6 New and Emerging Areas for the CSP

In July 2019, the then Home Secretary Sajid Javid announced a new legal duty on public bodies to prevent and tackle serious violence. The new 'public health duty' covers the police, local councils, local health bodies such as NHS Trusts, education representatives and youth offending services and it aims to ensure that relevant services work together to share data, intelligence and knowledge to understand and address the root causes of serious violence including knife crime. It will also allow them to target their interventions to prevent and stop violence altogether

As part of the new duty, the government will amend the Crime and Disorder Act to ensure that serious violence is an explicit priority for Community Safety Partnerships by making sure they have a strategy in place to tackle violent crime.

This new public health duty was been created taking into account responses from professionals in health, education, police, social services, housing and the voluntary sector after an eight-week public consultation, the findings of which can be found at Appendix 2.

More details on the specific requirements of the new duty will be presented to Elected Members as they emerge.

4. Recommendation

- 4.1 That progress made by the North Worcestershire CSP be noted.

5. Appendices

Appendix One: NWCSF Structure

Appendix Two: Home Office Consultation on Serious Violence Duty

6. Background Papers

West Mercia PCC's Safer West Mercia Plan 2017/21

Officer Contact Details:

Name: Bev Houghton

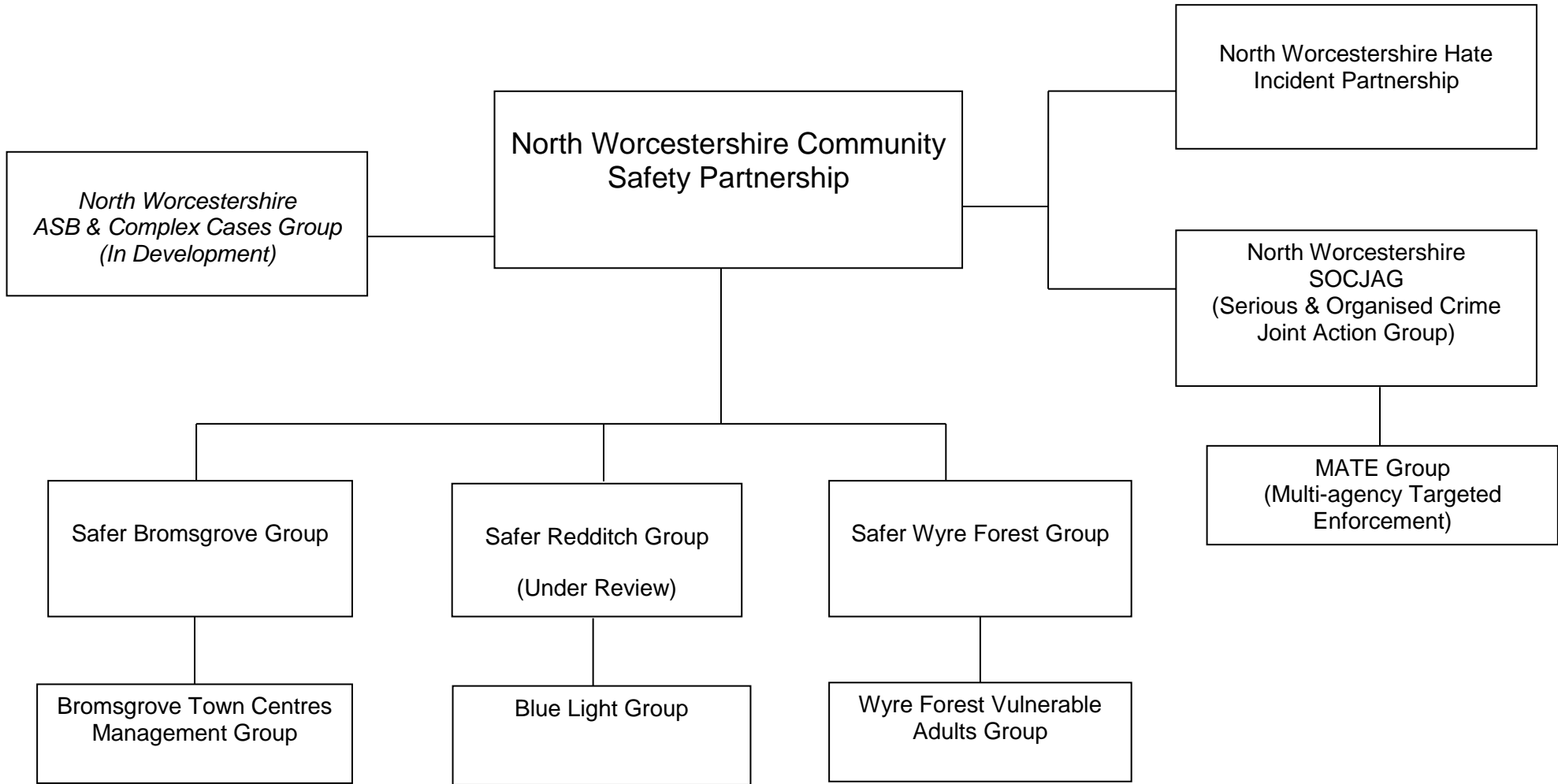
Title: Community Safety Manager

Tel: 01527 534187

Email: bev.houghton@bromsgroveandredditch.gov.uk

This page is intentionally left blank

Appendix 1: Structure of the North Worcestershire Community Safety Partnership



This page is intentionally left blank



Home Office

Consultation on a new legal duty to support a multi-agency approach to preventing and tackling serious violence

Government response

Contents

| | |
|--|----|
| Outline and contact details | 2 |
| Introduction: Government Approach | 3 |
| Background | 5 |
| Summary and next steps | 6 |
| Annex A: Summary of responses | 12 |
| Responses to specific questions | 14 |
| Part 1: General questions | 14 |
| Part 2: Current work in the area of serious violence | 16 |
| Part 3: Questions posed in the body of the consultation document | 17 |
| Part 4: Questions about the consultation options and their possible impact | 22 |
| Final questions relating to all options, for all respondents | 26 |
| Offline Responses | 28 |
| Annex B - Methodology | 30 |
| Annex C: Consultation principles | 31 |

Outline and contact details

This document is the post-consultation report for the consultation paper, “Consultation on a new legal duty to support a multi-agency approach to preventing and tackling serious violence”.

It will cover:

- introduction: Government approach
- the background to the consultation
- a summary of the consultation responses
- the next steps following this consultation
- a detailed response to the specific questions raised in the consultation

Further copies of this report and the consultation paper can be obtained by contacting the Serious Violence Unit at the address below:

Serious Violence Unit
Home Office
5th Floor, Fry Building
2 Marsham Street
London
SW1P 4DF

Telephone: 0207 035 8303

Email: SVLegalDutyConsultation@homeoffice.gov.uk

This report is also available at <https://www.gov.uk/government/consultations/serious-violence-new-legal-duty-to-support-multi-agency-action>

Alternative format versions of this publication can be requested from SVLegalDutyConsultation@homeoffice.gov.uk.

Complaints or comments

If you have any complaints or comments about the consultation process you should contact the Home Office at the above address.

Introduction: Government Approach

1. The Government's Serious Violence Strategy is clear that tackling serious violence is not only a law enforcement issue, it needs a multi-agency approach involving a range of partners and agencies such as education, health, social services, housing, youth and victim services with a focus on prevention and early intervention. Action should be guided by evidence of the problems and what works in tackling the root causes of violence. To do this, we must bring organisations together to share information, data and intelligence and encourage them to work in concert rather than in isolation.
2. The proposed new duty is a key building block of the Government's public health approach to preventing and tackling serious violence. We are also investing £100m extra funding in 2019/20 to support increased police activity to tackle knife crime. This includes the provisional allocation of £35m funding for the introduction of Violence Reduction Units in the 18 force areas most affected by serious violence. The proposed duty will complement and assist the Violence Reduction Units in their aim of preventing and tackling serious violence, by providing a strategic platform with the right regulatory conditions to support successful delivery of this multi-agency approach, including through the extended set of partners on whom the duty will fall.
3. Other building blocks to the approach include the £200m investment over ten years for the Youth Endowment Fund, which will focus on targeted early intervention with those children and young people most vulnerable to involvement in serious violence; and the establishment of the cross party, cross sector, Serious Violence Taskforce which is chaired by the Home Secretary, to provide additional oversight and external challenge of this critical work.
4. This all builds on the Government's Serious Violence Strategy which was published in April 2018. In particular, it builds on the analysis of the drivers and risk factors for serious violence set out in the Strategy, as well as the Strategy's commitments such as the investment of £22m in the Early Intervention Youth Fund which is supporting 40 projects in England and Wales; and the introduction of the National County Lines Coordination Centre which has already co-ordinated three separate weeks of intensive law enforcement action resulting in more than 1600 arrests, over 2100 individuals engaged for safeguarding, and significant seizures of weapons and drugs.
5. Noting the opportunities and challenges that have been described in response to the options in the consultation, the Government intends to bring forward primary legislation, when parliamentary time allows, to create a new duty on relevant agencies and organisations to collaborate, where possible through existing partnership structures, to prevent and reduce serious violence. In doing so, the Government will create the conditions for flexibility in local areas to allow agencies and bodies to determine how best to work together to address local need. The Government also recognises the important role of Community Safety Partnerships in this context, so we

will amend the Crime and Disorder Act 1998 to ensure that serious violence is an explicit priority for Community Safety Partnerships.

6. The geographical scope of the proposed new duty is England and Wales, mirroring that of the Serious Violence Strategy. The Welsh Government supports this approach which recognises the importance of creating flexibility for local areas and the intention to complement the existing mechanisms that are already in place to tackle serious violence, and the different legislative and partnership landscape in Wales.

Background

7. The consultation on a new legal duty to support a multi-agency approach to preventing and tackling serious violence was published on 1 April 2019. It invited comments on three options for achieving an effective multi-agency approach to preventing and tackling serious violence.
8. The three proposals set out in the consultation document were:
 - Option one: a new duty on specific organisations to have due regard to the prevention and tackling of serious violence. This was the Government's preferred option and would be achieved by introducing primary legislation to place a new duty on specific organisations to have due regard to the prevention and tackling of serious violence. The list of specific organisations would include local authorities, senior figures in criminal justice institutions, education, child care institutions, health and social care bodies and the police. It would not necessitate a specific multi-agency setting but would act to encourage and improve partnership working and information sharing.
 - Option two: a new duty through legislation to revise Community Safety Partnerships. This could be achieved through legislating to amend Community Safety Partnerships to ensure they have a strategy for preventing and tackling serious violence. This option would directly commit organisations to become members of a partnership (in this case, the Community Safety Partnership) rather than requiring organisations to have "due regard" to preventing and tackling serious violence.
 - Option three: a voluntary non-legislative approach. This approach would encourage areas to adopt voluntary measures to engage in a multi-agency approach instead of, or to complement, introducing a new statutory duty. This would mean a range of organisations would recognise they have an important role to play in preventing and tackling serious violence. The Government would support communities and local partnerships by facilitating the sharing of best practice across geographical boundaries and providing guidance where appropriate.
9. The consultation closed on 28 May 2019 and this report summarises the responses, including how the consultation process influenced the development of the policy consulted upon.

Summary and next steps

10. We have reviewed all responses received to the consultation, through the online questionnaire, postal and email submissions, a breakdown of the results, and findings from these have been set out in this consultation response document at Annex A. The responses indicated that there is clear support for the Government's description of an effective multi-agency 'public health' approach to preventing and tackling serious violence, however there was no clear consensus about which of the three options listed in the paper would best achieve this approach.
11. As set out in the introduction, the Government intends to bring forward primary legislation to create a new duty on organisations to collaborate, where possible through existing partnership structures, to prevent and reduce serious violence, and in recognition of the important role of Community Safety Partnerships in this context, we also intend to amend the Crime and Disorder Act 1998 to ensure that serious violence is an explicit priority for Community Safety Partnerships.

Option One: New duty on specific organisations to have due regard to the prevention and tackling of serious violence

12. 37% of responses supported option one¹. Of respondents who provided information about their professional sector and favoured one of the three options, option one was the preferred option for the criminal justice sector, police and crime commissioners and the research sector. The police sector and members of the public supported equally options one and two.
13. Although some partnerships work well in tackling serious violence, in others there are gaps in performance in terms of competing priorities, strength of partnership, and/or a lack or absence of important elements such as data sharing and intelligence. Successfully dealing with this issue means ensuring that all relevant agencies are focussed on and accountable for preventing and reducing serious violence and a new duty is an important means of achieving this. This option has the advantage in that it places a new duty on specific organisations or authorities but leaves it to them to decide how best to comply. It therefore provides flexibility, but the logic of such a duty should mean that the relevant organisations will engage and work together in the most effective local partnership in that area.
14. We are clear that there is a need for a multi-agency approach involving partners and agencies. Primary legislation will place a statutory duty on specific organisations or authorities to ensure they are focussed on and accountable for preventing and

¹ This includes only online responses from those that did not respond "Yes" to any of the two alternative options, it also excludes any other responses other than "Yes" and "No", "such as "maybe" and "possibly".

reducing serious violence. We want to galvanise the partnerships that are not as effective at preventing and reducing serious violence currently by encouraging them to share data, intelligence and knowledge to generate evidence-based analysis of the problem and solutions.

15. Such a duty would create the conditions for relevant agencies and partners to collaborate and communicate regularly, to use existing partnerships and to share information and take effective coordinated action in their local areas. Ultimately, we want to reduce serious violence across England and Wales, ensuring that everyone can expect an effective collaboration and prioritisation wherever they live.
16. Along with increasing the consistency in terms of the prioritisation and accountability in organisations for preventing and reducing serious violence, respondents to the consultation also highlighted that option one would allow for local flexibility in deciding how to implement.
17. However, as with options two and three, option one did not have a majority of support from respondents to the consultation and we have considered the reasons given for this. As set out in Annex A, the majority were around the belief that existing duties and legislation are sufficient or suggesting funding and time pressures, however, the marked rise we have seen in serious violence since 2014 suggests that more needs to be done.
18. There were also respondents to the consultation who raised concerns that any duty would be placed on individual professionals. The intention has always been to introduce primary legislation that would place a duty on specific organisations, rather than on individual professionals to have due regard to the prevention and tackling of serious violence. However, we do understand the concerns raised where respondents to the consultation have understood option one to be similar to activities under the “Prevent duty”, set out in the Counter-Terrorism and Security Act 2015, which includes guidance detailing a range of activity for staff such as to undertake training to identify children at risk of being drawn into terrorism, and to challenge extremist ideas. In addition, some respondents raised concerns around the language proposed in option one, specifically having “due regard” being too vague or lacking clarity.
19. In considering these responses, we have re-visited how this new primary legislation will be framed and we have decided not to introduce legislation to “have due regard”, instead we will legislate to ensure that specific organisations or authorities have a duty to collaborate and plan to prevent and reduce serious violence. This change will ensure that the duty is the responsibility of agencies and bodies rather than individual professionals and to provide the necessary clarity around what is expected, while still enabling those organisations the freedom to decide how to best discharge this duty in their local area.
20. We have heard through the consultation responses that the duty should be flexible enough to take account of the problem profile in local areas. Therefore, we propose

that it will be open to the local area to set its own reasonable definition of serious violence for the purpose of defining the scope of its activities. We expect that this definition should encompass serious violence as defined for the purposes of the Government's Serious Violence Strategy and include a focus on issues such as public space violent crime at its core.

21. The consultation asked if the list of specified agencies set out in Schedule 6 of the Counter-Terrorism and Security Act 2015 are the right organisations to work to tackle and prevent serious violence, with 62% of online respondents agreeing². However, 107 respondents made suggestions for potential additional partners. The most commonly raised suggestions for additional partners to those already included in Schedule 6 were for the voluntary, community and faith sector, clinical commissioning groups and the fire and rescue service to be included.
22. While we have considered these suggestions, we do not feel that it is appropriate to extend the duty to the voluntary sector, instead we intend to provide guidance and support to local areas to ensure that the voluntary, community and faith sectors are engaged in activity effectively, to allow for flexibility at a local level to include the most relevant organisations to tackle and prevent serious violence.
23. The Government will give further consideration to the representations made during the consultation about suitable organisations and authorities who should be subject to the new duty. We will work across government and carry out further informal targeted consultation with relevant organisations and bodies following the Government response, to finalise the list of specific organisations or authorities.

Option Two: New duty through legislating to revise Community Safety Partnerships

24. 40% of online respondents supported option two³. Of respondents who provided information about their professional sector and favoured one of the three options, option two was favoured by fire and rescue services, health and social care, local government, housing and construction sectors and multi-agency boards. The police sector and members of the public supported equally options one and two.
25. This option differs from option one as it directly commits organisations to become members of a Community Safety Partnership rather than placing a duty on specified organisations to preventing and tackling serious violence. This has the benefit of the clarity of legislating for Community Safety Partnerships becoming the lead partnership in fulfilling this key mission against serious violence.

² 117 respondents answered "yes" to this question and 72 responded "no".

³ This includes only online responses from those that did not respond "Yes" to any of the two alternative options, it also excludes any other responses other than "Yes" and "No", "such as "maybe" and "possibly".

26. We recognise that Community Safety Partnerships are stronger in some areas than others, and this variation may initially impact on the effectiveness of some Community Safety Partnerships in tackling violent crime, with a number of respondents raising this concern. In addition, the geographical reach of Community Safety Partnerships might mean they are not the optimum partnership model in all areas. However, a number of respondents⁴ did raise the positive work underway within their area.

“The Community Safety Partnerships are well established with extensive cross-fertilised networks and embedded working practices across the field of community safety, criminal justice, health, safeguarding and the third sector. There has been around 20 years accumulated knowledge, skills, expertise, policy and practice developments across its broad portfolio, that can act as a solid foundation for the introduction of an additional duty and a reinvigoration of the Community Safety Partnership status.”

Blaenau Gwent County Borough Council

27. We believe that wherever possible, existing partnerships and structures should be used to bring relevant organisations together to prevent and tackle serious violence. While Community Safety Partnerships are not the only partnership to have responsibility for drawing together relevant partners, as an established multi-agency partnership they have a vital role to play in tackling and preventing serious violence.
28. That is why we intend to introduce legislation to amend section 6(1) of the Crime and Disorder Act 1998 which sets out the strategies Community Safety Partnerships must formulate and implement, to explicitly include serious violence. By ensuring Community Safety Partnerships formulate and implement a serious violence strategy it would ensure that it remains a priority at a local level. Combining this amendment to the Crime and Disorder Act, with a new duty on specific organisations or authorities, would also enable Community Safety Partnerships to raise the issues to a higher strategic level as necessary given that in some local areas there are a significant number of Community Safety Partnerships and this may make it difficult for other partners to engage with them effectively.

Option Three: A voluntary non-legislative approach

29. 23% of online respondents supported option three⁵. Of the respondents who provided information about their professional sector and favoured one of the three options, option three was favoured by the voluntary and community sector and the education and childcare sector.

⁴ 38

⁵ This includes only online responses from those that did not respond "Yes" to any of the two alternative options, it also excludes any other responses other than "Yes" and "No", "such as "maybe" and "possibly".

30. A voluntary non-legislative approach was the option in the consultation document that the fewest respondents felt would be the best approach to tackle and prevent serious violence. Some (25) respondents used the consultation to provide detail about voluntary approaches being taken in their areas, and while there are some voluntary arrangements which work well, a high number of respondents (87) highlighted concerns that without legislation the partnerships in some areas would be weaker than in others.
31. On 18 June 2019, the Home Secretary announced the provisional allocation of £35 million to Police and Crime Commissioners in 18 areas to set up Violence Reduction Unit. These will bring together community leaders and other key partners with police, local government, health and education professionals to identify the drivers of serious violence and develop a response to them. Violence Reduction Units will ensure there is effective planning and collaboration to support a longer-term approach to preventing violence. The proposed duty will complement and assist the Violence Reduction Units in their aim of preventing and tackling serious violence, by providing a strategic platform with the right regulatory conditions to support successful delivery of this multi-agency approach, including through the extended set of partners on whom the duty will fall.
32. We have been working closely with other Government departments and partner agencies, including the police and existing Violence Reduction Units, to develop the core set of requirements that those in receipt of Violence Reduction Unit funding will need to deliver. This has allowed us to provide a clear steer to local areas on how we expect Violence Reduction Unit funding to be applied.

Additional considerations

Inspection, accountability and enforcement

33. It is clear from the majority of online responses to the consultation that responsible authorities subject to the duty would best be held to account through inspections, either joint thematic inspections or by individual inspectorates through their existing inspection powers. We will undertake an informal consultation with inspectorates to scope options for an inspection regime. For example, through joint thematic inspections.
34. There will also be an expectation on relevant agencies, including for any public authorities for which there is no existing inspection body, to publish details of how they carry out their responsibilities under the duty, for example through existing monitoring arrangements or through local multi-agency plans. Finally, the Government will continue to consider what enforcement action for non-compliance might be required.

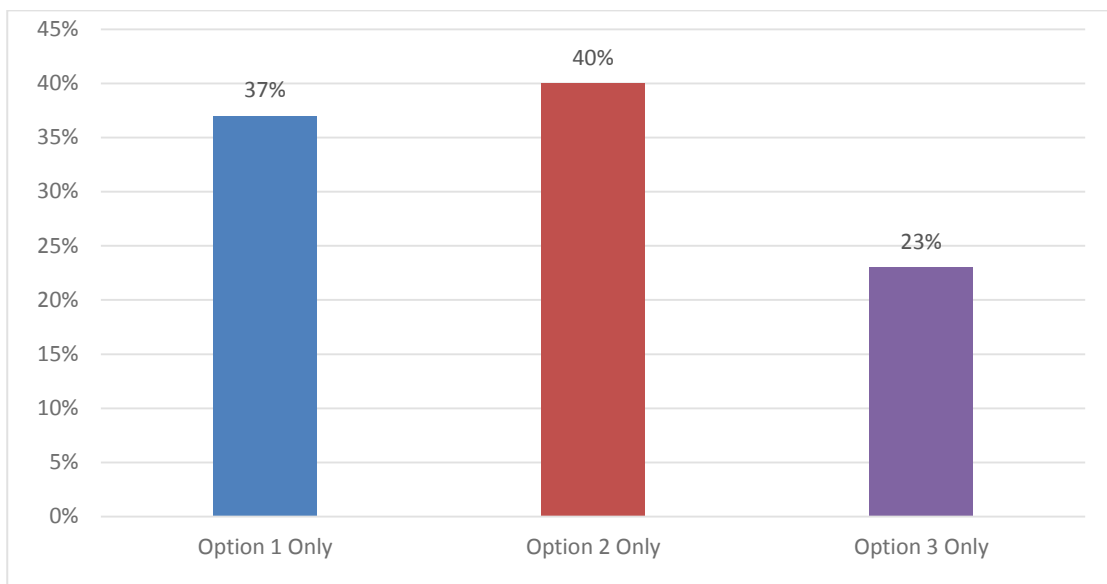
Guidance and support for local areas

35. The Government will publish guidance supporting the new legislation to assist statutory agencies to effectively deliver a multi-agency public health approach. The guidance will highlight best practice and explain how different partnership models can work in practice, including with Violence Reduction Units. In doing so, we will emphasise the importance of involving the voluntary, community and faith sectors, recognising the key contribution that they are able to make in this area, but also allowing for flexibility to ensure that appropriate organisations are working together to tackle the specific challenges faced across England and Wales.

Annex A: Summary of responses

1. A total of 225 responses to the consultation paper were received⁶. Of the 221 respondents who answered the question⁷, 57 (26%) reported that their agency or organisation was in the local government sector, 31 (14%) reported their organisation was in the voluntary and community sector and 29 (13%) reported their agency or organisation was in the police sector.
2. The consultation document provided three options for ways to tackle and prevent serious violence. Of the responses provided to the consultation paper, while there was overall support for the vision to use a multi-agency approach to tackle and prevent serious violence, there was no single option proposed to achieve this that garnered a majority of support.

Table 1: Options Preference



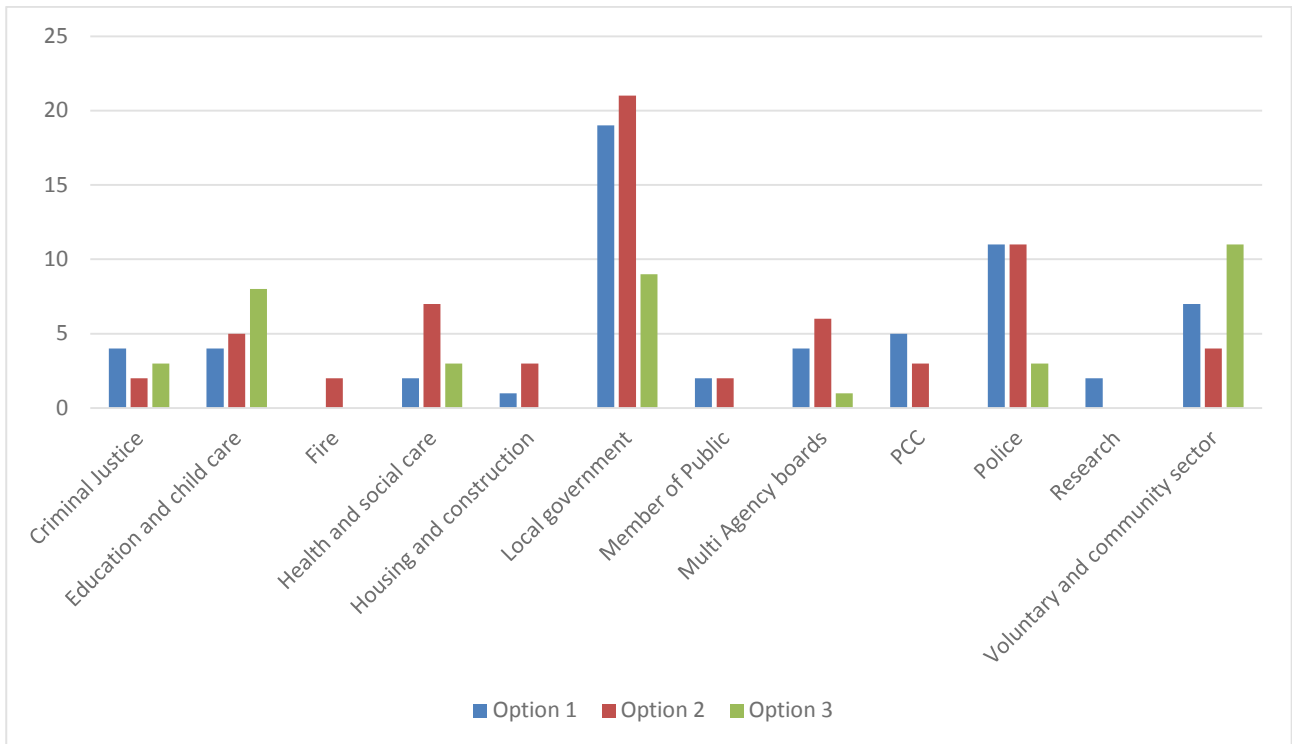
For each option, the graph includes the response for only those that have not responded "Yes" to any of the two alternative options. This chart excludes any other responses other than "Yes" and "No", "such as "maybe" and "possibly".

3. The below chart shows the options favoured by each organisation or agency, where respondents indicated a preference and selected a profession or area in which their organisation worked.

⁶ We received a total of 288 responses to the consultation. 207 responses were received via the Home Office online survey tool, and 81 survey responses were received offline either by completed offline questionnaire, letter or email. 18 of these responses had been filled in to mirror the consultation document and these were added to the 207 and these 225 were analysed together. 63 responses have been analysed separately as "offline responses".

⁷ Excludes 4 responses that did not answer this question

Table 2: Option preference by organisation/agency



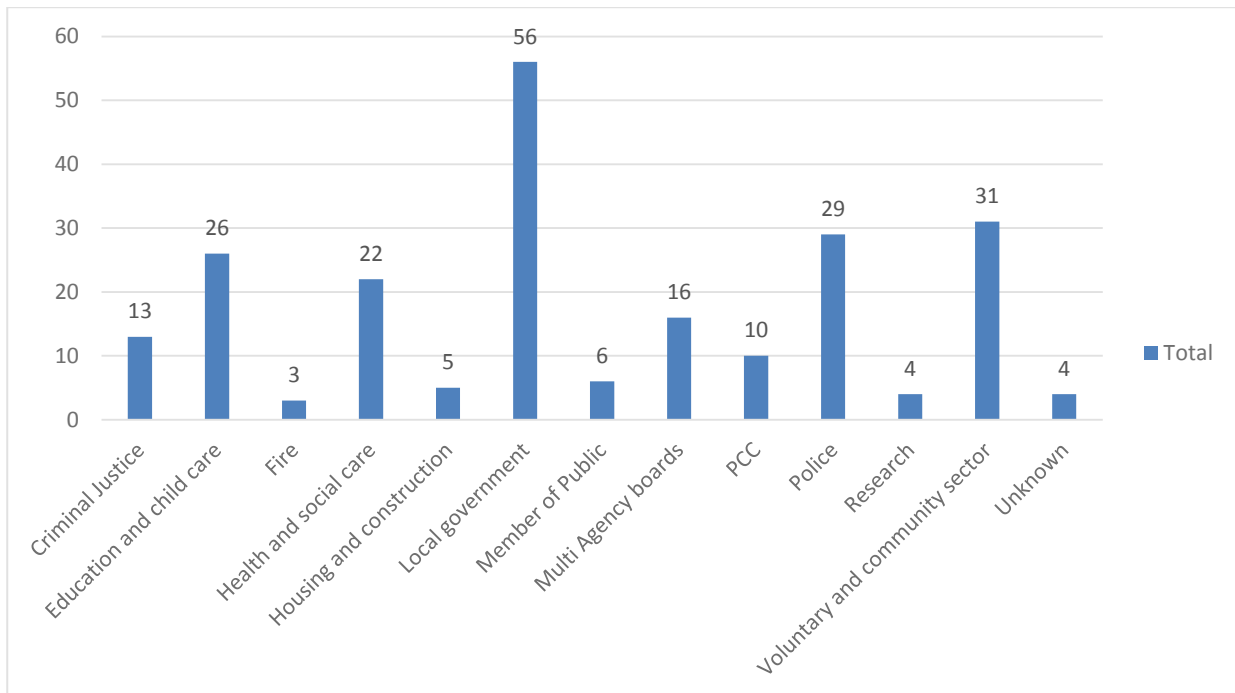
This chart excludes, those that answered yes to multiple options

Responses to specific questions

Part 1: General questions

What sector does your agency/organisation represent?

Table 3: Number of responses by agency/organisation



4. Of the 221 respondents who answered the question, 57 (26%) reported that their agency or organisation was in the local government sector, 31 (14%) reported their organisation was in the voluntary and community sector and 29 (13%) reported their agency or organisation was in the police sector.

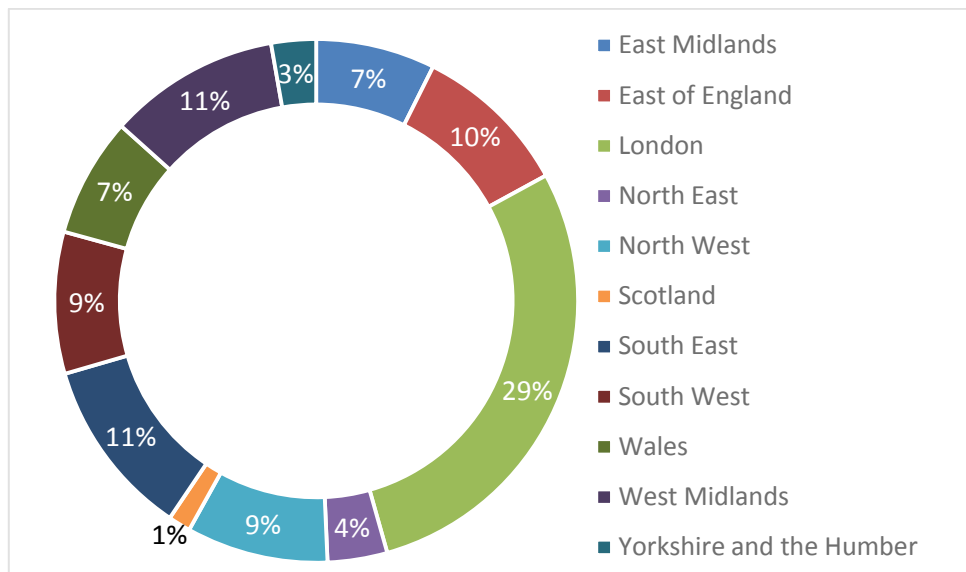
Is your agency/organisation part of or does it work with any existing multi-agency partnership such as a Community Safety Partnership?

5. 76% of those responding to the question reported that their organisation or agency either is currently part of, or works with, an existing multi-agency partnership.

Where is your agency/organisation based?

6. With the exception of Northern Ireland, responses were received from those working in organisations or agencies across the UK. The largest number of responses for any one area came from London with 62 (29%) of the 216 respondents who answered the question. The fewest responses received in England and Wales came from Yorkshire and the Humber with only 6 (3%).

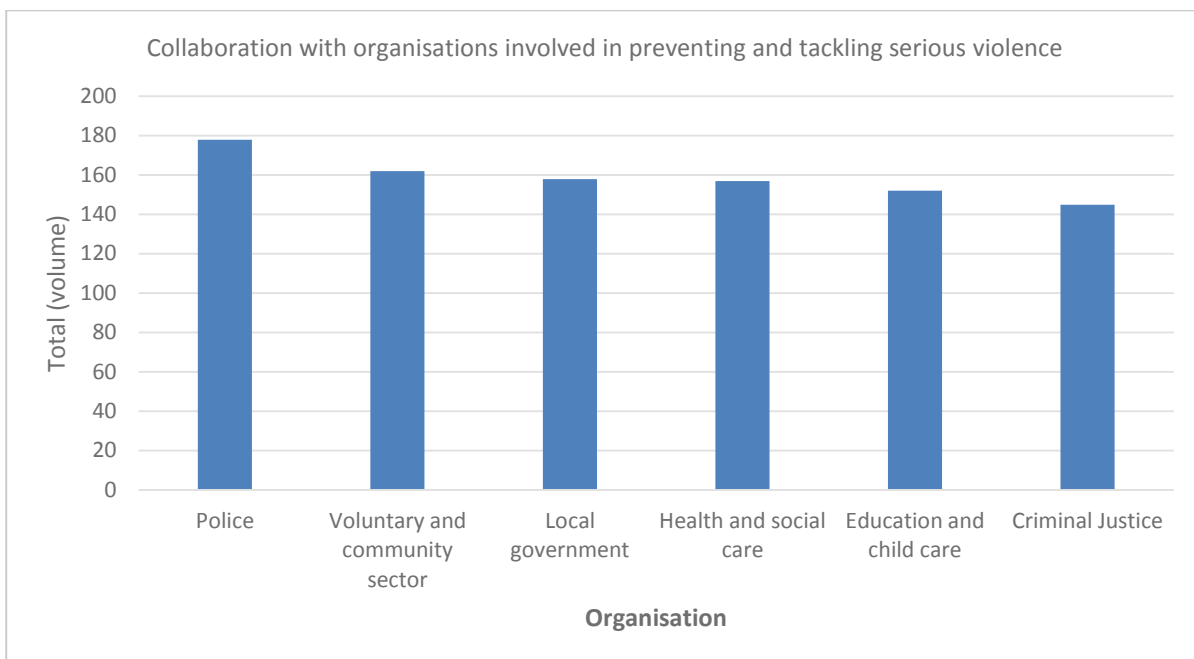
Table 4: Percentage of responses by region



What agencies/organisations do you work closely with to prevent and tackle serious violence in your area? Multiple answers possible

7. Of the respondents that indicated they work with other organisations in preventing and tackling serious violence, the most commonly selected organisations or sectors were: police, voluntary and community sector, local government and health and social care. However, the majority of respondents indicated they worked with all the organisations listed.

Table 5: Number of respondents working in collaboration with other organisations

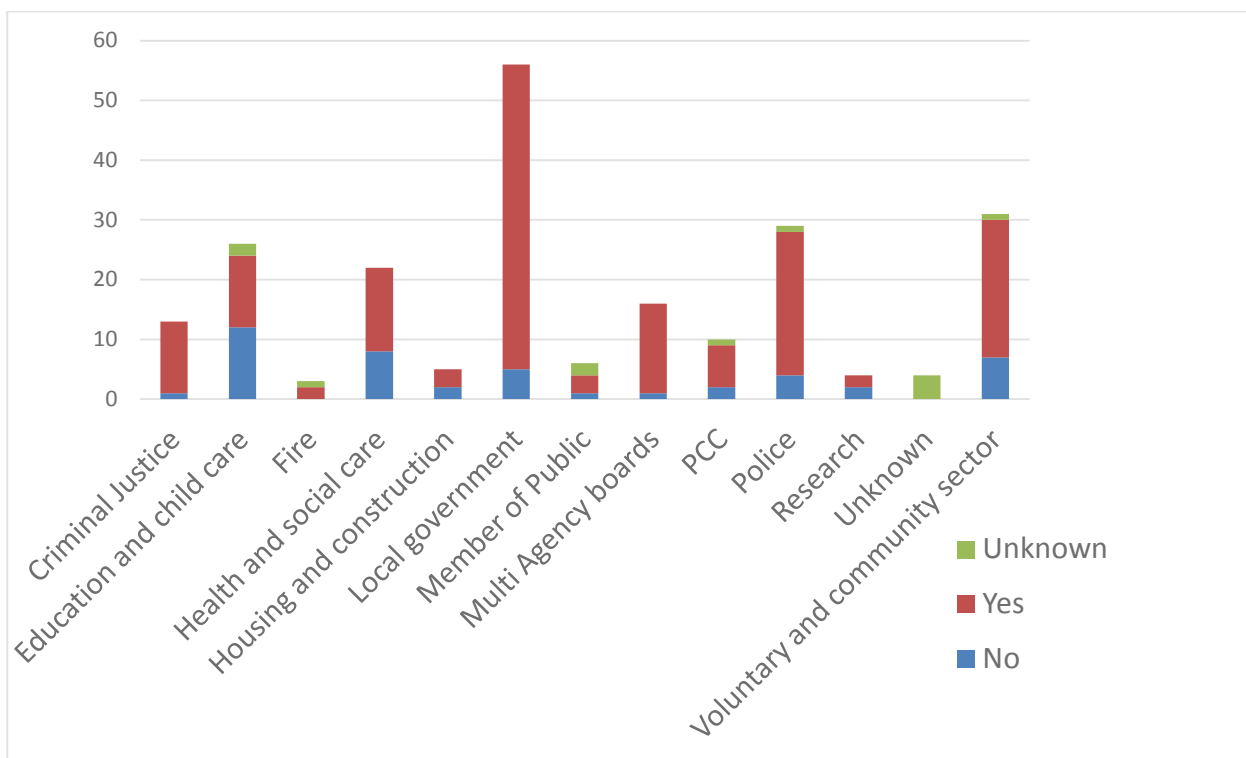


Part 2: Current work in the area of serious violence

Does your agency/organisation currently have activities in place to prevent/tackle serious violence?

8. The majority of those responding to this question (79%) answered yes to this question that there are currently activities within their organisation or agency to prevent and/or tackle serious violence. The chart below provides a breakdown per agency or organisation responding. Out of the 24 respondents from the education and childcare sector that provided an answer, 50% reported that their agency/organisation does not currently have activities in place to prevent/tackle serious violence.

Table 6: Number of respondents with current activities in place



If you are currently working in an agency/organisation with an interest in serious violence:

What kind of activity do you undertake in preventing and tackling serious violence? *Multiple answers possible.*

9. The most commonly raised activities respondents answering this question said that they were undertaking were early intervention and preventative initiatives for root causes e.g. education and funding for intervention and prevention services e.g. youth services and drug/alcohol centres.

If you currently do not have activities in place to prevent/tackle serious violence, what activities do you feel would be beneficial to address serious violence in your area? Open question.

10. Of those responding to this question, some raised concerns in their responses that preventing or tackling serious violence was not part of their role and took the opportunity to express their dislike for the policy proposals outlined in the consultation document. The most common point raised in these responses was that preventing or tackling serious violence was not part of the role of the individual responding or organisation (for example educational or health professionals).
11. Of those responding suggesting activities that would be beneficial, the suggestions included early intervention and prevention initiatives, including increased funding to support initiatives and further funding for the police.

“Early intervention programmes to reduce the known risk factors among vulnerable children and young people.”

Central Bedfordshire Council

“Local Authority ring fence funding on prevention services aimed at preventing underlying causes of serious violence, and in particular drug treatment services”

Office of the Durham Police & Crime Commissioner

Part 3: Questions posed in the body of the consultation document

Do you agree that the vision and focus for a multi-agency approach to preventing and tackling serious violence is correct? If not, please explain why.

12. The clear majority of respondents (86%) to the consultation indicated support for a multi-agency approach to preventing and tackling serious violence.
13. Of those providing an open question response, the majority reiterated their support for a multi-agency approach or from those providing positive work underway in their area or supporting academic research.
14. The most commonly raised reasons for not supporting the vision for a multi-agency approach to preventing and tackling serious violence were the concerns that it does not focus on the broader or underlying issue causing serious violence, or concerns around the lack of funding or time organisations and staff have.

“I think more needs to be done at the early intervention stage by other agencies in conjunction with police there are opportunities that are missed to divert people getting involved in serious violence”

Met Police Officer

“... we do not consider that the vision developed in this consultation fully represents a public health approach to serious violence. The public health approach considers serious violence as an epidemic that has to be treated with the same whole system preventative approach as an epidemic disease.”

Safer London

**Do you consider that Option One would best achieve the consultation vision?
Please explain why.**

15. 37% (61) of respondents stated that Option One was their preferred option. The most commonly raised explanations for either agreeing or disagreeing with Option One were that existing duties and legislation were sufficient to tackle serious violence (39) or a dislike for taking a legislative approach. Respondents also raised concerns around the lack of funding or time organisations and staff have.
16. Respondents also expressed that Option One would allow for local flexibility in deciding how to implement and that it could have a positive impact on consistency across England and Wales in terms of the prioritisation and accountability in organisations for tackling serious violence. A number of respondents also highlighted the positive work they are doing with regard to tackling serious violence or suggestions for how Option One could work in their area.

“It is believed that the existing duty to consider crime and disorder in all aspects of service delivery is sufficient and a further specific duty would simply duplicate this.”

Oldham Community Safety & Cohesion Partnership

“I think that the partnership landscape is complex and becoming ever more so. Statutory footing would ensure that partners had clear deliverable frameworks and would give the ability to challenge and hold each to account.”

Avon & Somerset Police, Safeguarding Team

“This enables agencies to prioritise the issue of serious violence but to be creative in creating bespoke multi agency solutions that work for the local area”

Cheltenham Borough Council, Strategy & Engagement

“We consider Option One to be the best means of achieving the consultation vision. Establishing a new legal duty to support a multi-agency approach provides both focus and accountability for partners to prevent and tackle serious violence.”

Office of Gwent Police & Crime Commissioner

Do you consider the specific agencies listed in Schedule 6 to the Counter-Terrorism and Security Act 2015 the right partners to achieve the consultation vision? If not, please explain why.

17. Of the 185 respondents who provided a definitive “yes” or “no” to this question, 111 felt that the agencies listed in schedule 6 were the right partners to achieve the consultation vision, 74 respondents did not. However, 107 respondents then went on to answer the second part of the question. The majority of those responding to this question felt that the list of organisations as set out in Schedule 6 needed to be updated. The most commonly raised suggestions for additional partners to those already included in Schedule 6 were for the voluntary, community and faith sector (23), clinical commissioning groups (19) and the fire and rescue service (15).

“There is a significant role for the wider voluntary, community and faith sector in relation to delivering sustainable long-term outcomes for the vision.

Sefton Council, Communities Team

“CCG’s should be an integral core member, if they don’t commission the right services (with the most effective measures), there could be a fractured offer across the piece.”

Avon & Somerset Police, Safeguarding Team

“Consideration may also need to be given to including Fire and Rescue Authorities given their role in prevention.”

Welsh Local Government Association

Do you consider that Option two would best achieve the consultation vision? Please explain why.

18. 40% of respondents felt that option two would best achieve the consultation vision. However, there were concerns expressed including the lack of funding or time organisations and staff have. There were also concerns raised about the inconsistency, both geographically and in terms of reach, that community safety partnerships had, that the option targeted the wrong agencies or made suggestions for alternative target agencies and that the current duties and legislation were sufficient to tackle serious violence.

19. Again, some respondents provided examples of how they believed option two could work and of positive work underway in their area or organisation.

“As noted in the consultation document, the geographical reach of Community Safety Partnerships differs across the country and in many cases means that they are not the optimum partnership model as decision making may be more effective at a higher strategic level.”

Devon County Council, Communities Team

“...partnership established would be insufficient to achieve consistency cross sector. This would not be in line with existing practices including the partnership established through the OPCC. There would be concerns that this would lead to geographical inconsistency by not harmonising the approach across PCC areas.”

East Sussex County Council, Communities Team

“Community Safety Partnerships are in a key position to challenge serious violence as a contextual safeguarding arena. However, the issue cannot be addressed just through these partnerships and need health providers and education, amongst others, to work effectively together, to avoid exclusion and put in services at the Early Help level.”

Devon County Council, Communities Team

Should the list of Statutory Partners in Community Safety Partnerships be added to so that they can adequately prevent and tackle serious violence in local areas? If so, what organisations?

20. The majority of those responding believed that the list of statutory partners in Community Safety Partnerships should be added to with 116 respondents definitively responding “yes” to the first part of this question and 68 responding “no”. However, 131 respondents went on to provide a further response, with the most commonly seen suggestions being educational establishments (schools, colleges etc), the voluntary, community and faith sector and residential homes and social landlords.

“Education – particularly when working on these issues due to the links between gang involvement and exclusions/off rolling. Working with young people in PRUs is key when considering this agenda.”

Safer Wolverhampton Partnership, City of Wolverhampton Council

“The communities and the young people affected by violence who are not represented in any of the available options.”

MAC UK

“If option 2 is selected, we feel that a wide range of third sector organisations must be involved, including equality organisations”

Diverse, Cymru

“All housing providers should have a greater statutory role in crime prevention and all health agencies should have more explicit duties placed on them with regard to information and data sharing.”

Redditch Borough Council & Bromsgrove District Council

**Do you consider that Option Three would best achieve the consultation vision?
Please explain why.**

21. This was the least preferred option with only 23% of respondents believing that option three would be the best approach. The most frequently cited reasons for it not being the best approach were that the respondent either did not think that a voluntary approach to tackling serious violence would work as it was weak or that legislation was needed.

“There was no support for a voluntary, non-legislative approach. In the current financial climate where resources are stretched so thinly it was felt that there needed to be an element of compulsion and if there was not, then organisations would simply opt out.”

Northumbria Police

“This would be a backward step. We need the strength of legislation to tackle a national problem”

Haybrook College

“In order to engage all necessary partners included within this vision we believe a requirement to participate is necessary.”

Office of the Police Fire & Crime Commissioner for Essex

What other measures could support such a voluntary multi-agency approach to tackling serious violence, including how we ensure join up between different agencies?

22. Of the 150 people/organisations responding to the question about what other measures could support a voluntary multi-agency approach, a number of points were raised including funding, information and intelligence sharing, the requirement for a strong and clear lead or governance structure to be in place and the need for timely and therapeutic interventions.

23. As with previous options, some respondents provided examples of work being done, and models used within their area or by their organisation.

“Easier information sharing processes and regular meetings to discuss areas of concern.”

OneLife Suffolk

“Have a national body lead that is recognised and has authority. Doesn’t need to be directly linked to government like Home Office.”

Met Police Officer

Part 4: Questions about the consultation options and their possible impact

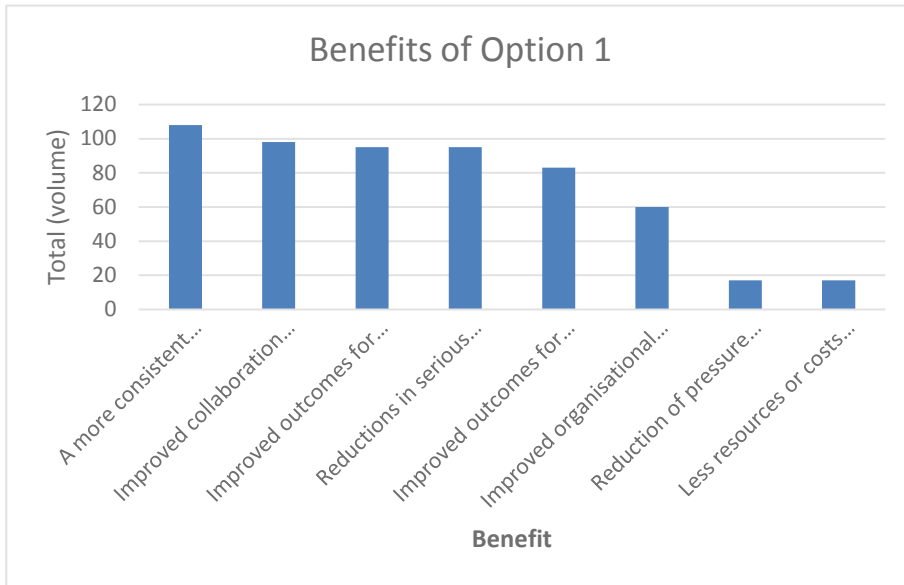
24. Many of the responses provided to the questions in Part 4 of the consultation document (time/resource, staff and other costs) have been used to inform our impact assessment which has been published alongside this response document. For further details please see the published impact assessment.

Option 1: a new duty on specific organisations to have due regard to the prevention and tackling of serious violence

What, if any, benefits do you envisage under the proposed option? Multiple answers possible.

25. Of the respondents that envisaged benefits under option one, the most commonly selected benefits were a more consistent approach in preventing and tackling serious violence at the local level, improved collaboration with other organisations and improved outcomes for victims and reductions in serious violent crime.

Table 7: Benefits of Option 1

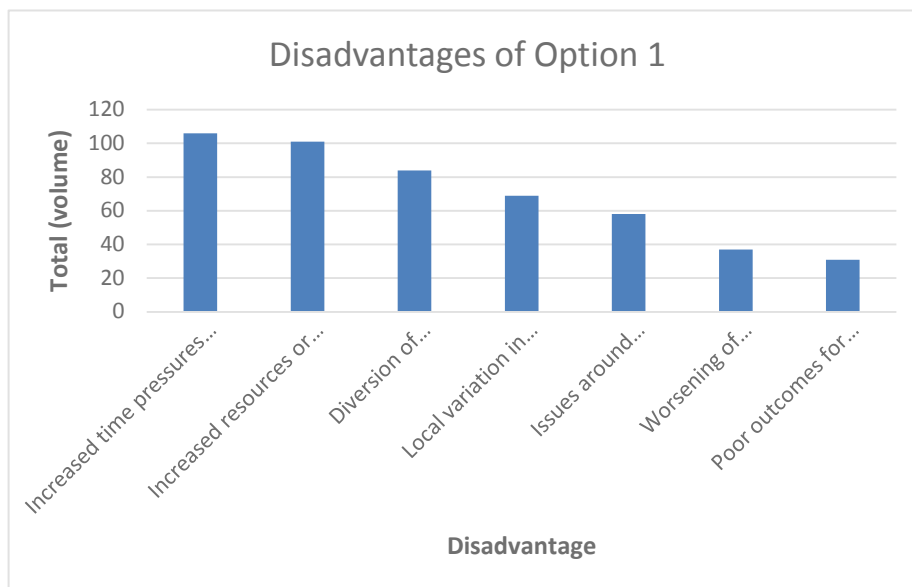


- Table key
- A more consistent approach in preventing and tackling serious violence at a local level
 - Improved collaboration with other agencies/organisations
 - Improved outcomes for victims
 - Reductions in serious violent crime
 - Improved outcomes for offenders
 - Improved organisational processes
 - Reduction of pressure upon time
 - Less resources or costs to your agency/organisation

What, if any, disadvantages do you foresee arising from the proposed option? Multiple answers possible.

26. Most respondents ticked 'no' for this question and did not identify any disadvantages with this option. Where concerns were raised these included potential time pressures and costs.

Table 8: Disadvantages of Option 1



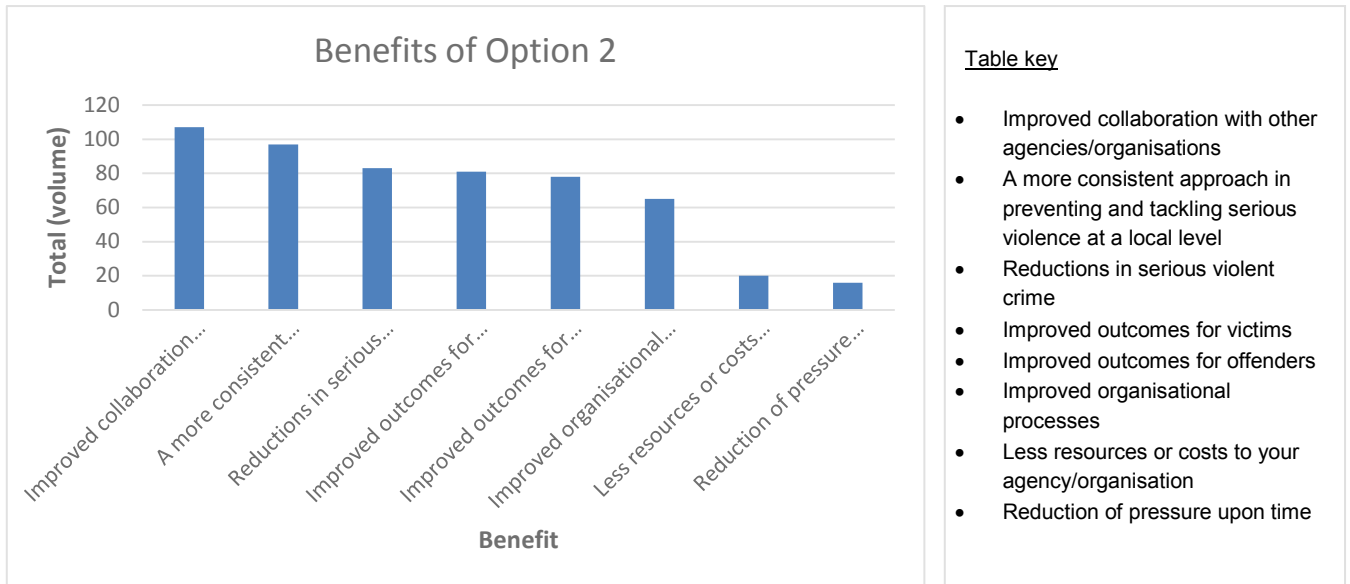
- Table key
- Increased time pressures on your organisation
 - Increased resources or costs to your organisation
 - Diversion of spending/resources away from other areas
 - Local variation in preventing and tackling serious violence
 - Issues around collaboration with other agencies/organisations
 - Worsening of organisational processes
 - Poor outcomes for victims/offenders

Option Two: New duty through legislating to revise Community Safety Partnerships

What, if any, benefits do you envisage under the proposed option? Multiple answers possible.

27. As with option one, of the respondents that envisaged benefits under option two the most commonly selected benefits were improved collaboration with other organisations and a more consistent approach in preventing and tackling serious violence at the local level. However, most respondents ticked 'no' for the listed benefits of option two.

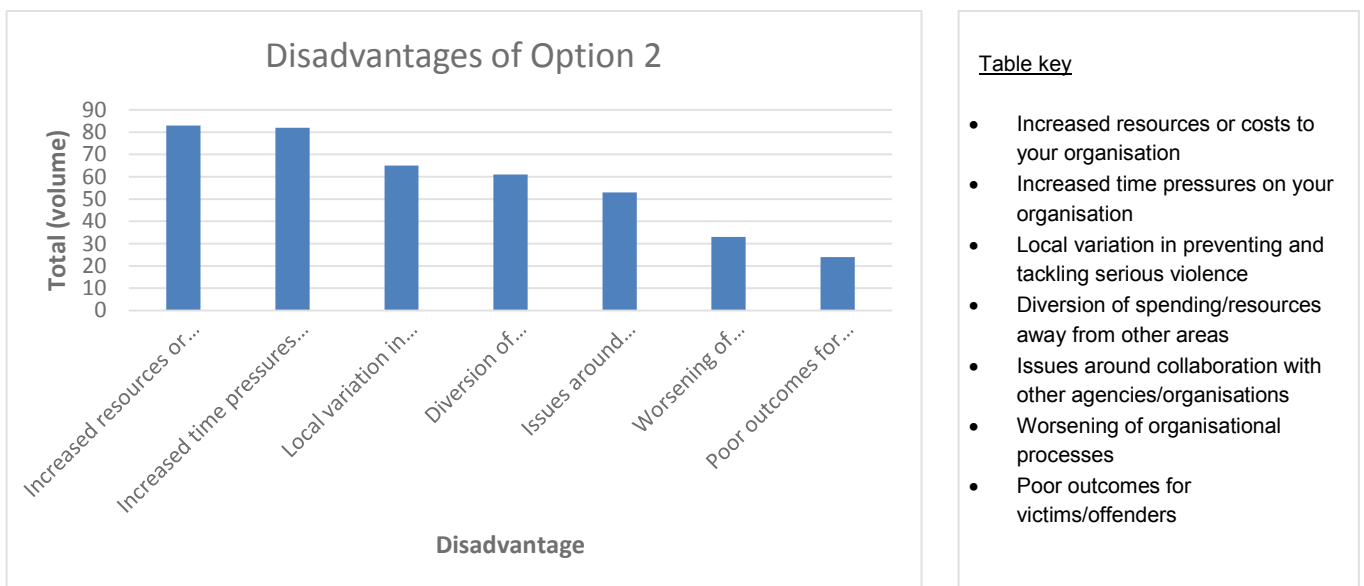
Table 9: Benefits of Option 2



- Table key
- Improved collaboration with other agencies/organisations
 - A more consistent approach in preventing and tackling serious violence at a local level
 - Reductions in serious violent crime
 - Improved outcomes for victims
 - Improved outcomes for offenders
 - Improved organisational processes
 - Less resources or costs to your agency/organisation
 - Reduction of pressure upon time

**What, if any, disadvantages do you foresee arising from the proposed option?
 Multiple answers possible.**

28. Most respondents ticked 'no' for this question and did not identify any disadvantages with this option. Where concerns were raised these included potential time pressures and costs.



- Table key
- Increased resources or costs to your organisation
 - Increased time pressures on your organisation
 - Local variation in preventing and tackling serious violence
 - Diversion of spending/resources away from other areas
 - Issues around collaboration with other agencies/organisations
 - Worsening of organisational processes
 - Poor outcomes for victims/offenders

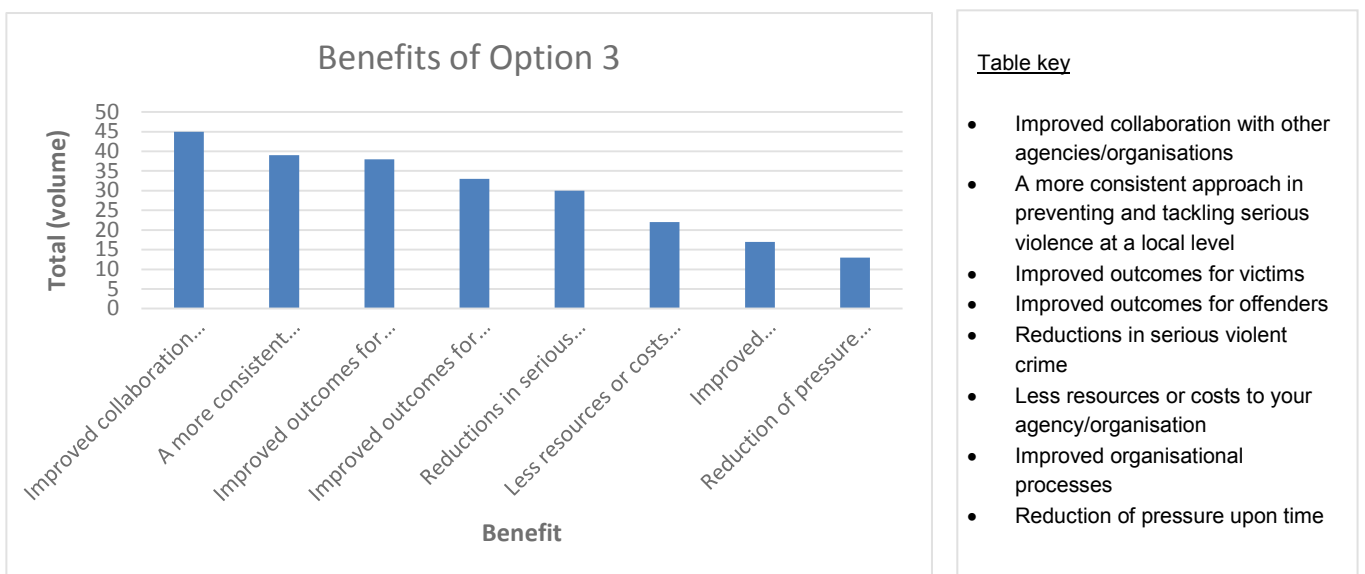
Table 10: Disadvantages of Option 2

Option Three: A Voluntary Non-legislative approach

What, if any, benefits do you envisage under the proposed option? Multiple answers possible.

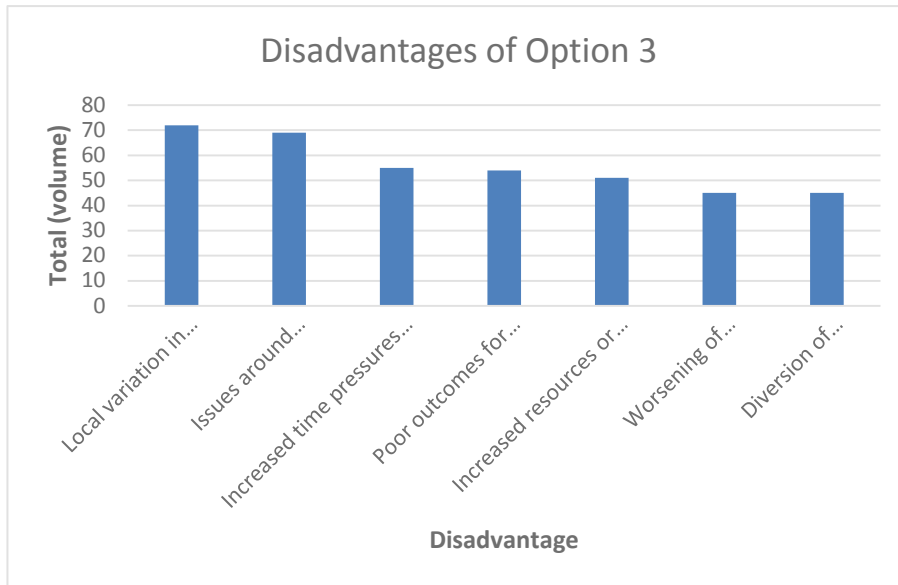
29. As with options one and two, of the respondents that envisaged benefits under option three the most commonly selected benefits were improved collaboration with other organisations, a more consistent approach in preventing and tackling serious violence at the local level and improved outcomes for victims. It should be noted that this option had fewer responses indicating benefits compared with options one and two.

Table 11: Benefits of Option 3



What, if any, disadvantages do you foresee arising from the proposed option? Multiple answers possible.

30. Most respondents ticked 'no' for this question and did not identify any disadvantages with this option. Where concerns were raised, these included local variation in preventing and tackling serious violence; and issues around collaboration with other organisations.

**Table key**

- Local variation in preventing and tackling serious violence
- Issues around collaboration with other agencies/organisations
- Increased time pressures on your organisation
- Poor outcomes for victims/offenders
- Increased resources or costs to your organisation
- Worsening of organisational processes
- Diversion of spending/resources away from other areas

Table 12: Disadvantages of Option 3

Final questions relating to all options, for all respondents

How can the organisations subject to any duty or voluntary response be best held to account?

31. Of the 196 respondents to this question, the majority thought that organisations subject to a duty or a voluntary response would be best held to account through inspections (either joint or by individual inspectorates), as suggested in the consultation document.
32. Other responses given included suggestions of self-reporting for organisations (for example through annual reports or self-assessments), through reporting against clearly defined performance measures or via existing accountability regimes and mechanisms.

“Through inspection processes in addition to performance frameworks that are robustly managed and monitored”

Office of Police & Crime Commissioner, Cleveland

“Supported by a meaningful national performance framework that measure positive impact over action and allows for consistency and baselining to identify good practice and struggling areas.”

Northamptonshire Police

“Submission of self-audit tools, action plans and remedial updates”

Safer North Hampshire

Aside from your answers given in previous sections, are there any other considerations that you would like to raise regarding one or more of the proposed options? Open question.

33. Of the 115 responding to this question, the most commonly raised response was, as seen in previous questions, concern around funding or time pressures faced by their organisation – a number of respondents also expressed the view that greater accountability or leadership was needed from the Government.
34. Again, a number of respondents took the time to inform us of local approaches being taken or to provide research or data.

Offline Responses

35. Alongside the online survey tool, we received a number of responses directly through the published email address inbox and one through the postal address.⁸ Of these, 63 responses were submitted in a format incompatible with the overall analysis and as such we have had to consider these separately here.
36. Of the 59 respondents who provided information about the sector that their agency/organisation represented, 25% were from the police sector, 22% from the local government sector, 12% were from the health and social care sector, 8% from both the education and childcare sector and the voluntary sector and 5% from the criminal justice sector. 18% were categorised as “other”, this included members of the public, unions, the Children’s Commissioner and housing bodies.
37. Of the 81 offline responses the majority, 78%, explicitly stated that they supported tackling and preventing serious violence through multi-agency working.
38. Where respondents expressed support for one of the options outlined in the consultation document, 14 respondents agreed with or supported option one, 15 respondents supported option two and 15 respondents supported option three. Seven respondents expressed support for a combination of options, for example option one and option two, option one and option three or option two and option three.
39. Some respondents also expressed disagreement for the options outlined in the consultation paper, with 21 disagreeing with option one, 15 disagreeing with option two and 13 disagreeing with option three.
40. Those responding offline, raised similar concerns to those responding online. Nine respondents did not support the adoption of a legislative approach and 10 respondents suggested that existing duties or legislation were sufficient to tackle and prevent serious violence. 20 respondents suggested that they needed further clarity on how the options would work and 19 raised the need for best practice sharing or guidance.
41. Regarding how organisations subject to any duty or voluntary response can be best held to account, 16 respondents provided an opinion. Seven advocated for joint or individual inspections, four suggested police and crime commissioners have governance and oversight of any duty, two respondents suggested accountability through clear performance measures and reporting and two respondents suggested that accountability should take place via existing accountability regimes.

1. ⁸ We received 81 offline responses either directly through the published email address inbox and one postal response. 18 of these responses had been filled in to mirror the consultation document and these 18 are included within the 225 responses considered within the overall analysis as set out in the previous chapter.

42. Additional suggestions raised by those responding offline included the need for early intervention, the need to involve the community, community groups and young people and the view that any response to serious violence should be based on evidence and research.

Annex B - Methodology

1. The consultation questions were developed by Home Office policy officials and analysts. Economists were involved in the questions relevant for the Impact Assessment.
2. We received a total of 288 responses to the consultation. 207 responses were received via the Home Office online survey tool, and 81 survey responses were received offline either by completed offline questionnaire, letter or email. 18 of these responses had been filled in to mirror the consultation document and these were added to the 207 and analysed these 225 were together. 63 responses have been analysed separately as “offline responses”. The analysis of the offline responses is further described in Annex A.
3. As the consultation was open for anyone to respond, it was not possible to calculate response rates.
4. Home Office analysts did not weight the findings as it was not possible to determine with confidence what responses were submitted in personal or professional capacity. In addition, the weighting would be arbitrary as there are various factors that could influence how much importance could be given to difference responses.
5. The open-ended questions in the online questionnaire and the other responses as submitted by email or post were coded into various themes to facilitate the analysis of large volumes of qualitative responses. The responses were predominantly coded following a ‘bottom-up’ approach in which the codes were developed based on the responses. The final coding framework as derived from the online coding then formed the basis for the offline coding, alongside any new codes that emerged from the analysis of the offline data.
6. Through this reiterative process a framework of common themes emerged, which were subsequently used for the analysis.
7. As a guiding principle, for each question the most frequently occurring responses were identified and reported accordingly.
8. The closed questions relating to the three options and their costs and benefits were analysed in Excel by two Home Office analysts and this analysis was subsequently checked for quality by two Home Office analysts not involved in the analysis previously.
9. The open questions relating to the costs and benefits of the three options were coded and analysed by one Home Office analyst in Excel. One Home Office analyst not

involved in the coding and analysis checked a random sample of 30 per cent of the coded responses and the final analysis.

10. The other open questions of the online questionnaire and offline responses as reported in this document were coded and analysed by policy officials in Excel. The coding was conducted by two policy officials for each set of online and offline responses, and one Home Office analyst not involved in the coding checked a random sample of approximately ten per cent of the coded responses.
11. The findings as presented in this document exclude the blank responses.
12. The findings from the open-text responses as presented in this document were not broken down by geography or sector due to a low number of responses per theme identified.

Annex C: Consultation principles

The principles that government departments and other public bodies should adopt for engaging stakeholders when developing policy and legislation are set out in the consultation principles.

<https://www.gov.uk/government/publications/consultation-principles-guidance>



© Crown copyright 2019

This publication is licensed under the terms of the Open Government Licence v3.0 except where otherwise stated. To view this licence, visit nationalarchives.gov.uk/doc/open-government-licence/version/3 or write to the Information Policy Team, The National Archives, Kew, London TW9 4DU, or email: psi@nationalarchives.gsi.gov.uk.

Where we have identified any third-party copyright information you will need to obtain permission from the copyright holders concerned.

This publication is available at www.gov.uk/government/publications

Any enquiries regarding this publication should be sent to us at public.enquiries@homeoffice.gsi.gov.uk.

This page is intentionally left blank



Redditch Crime & Disorder Scrutiny Panel

Anti-Social Behaviour Overview

Bev Houghton

Community Safety Manager

North Worcestershire Community Safety Partnership

Tel: 01527 534187

Email: bev.houghton@bromsgroveandredditch.gov.uk



Overview

- How do we:
 - Define Anti-Social Behaviour?
 - Measure it?
- What patterns can we observe?
 - Incident types
 - Seasonal
 - Geographical
 - Neighbourhood
- How can we find out more?



Defining ASB

- Home Office, 2014
 - “Behaviour likely to cause harassment, alarm or distress to any person. This will apply for example where the ASB has occurred in a public place... and where the behaviour does not affect the housing management functions of a social landlord or people in their homes.” (p22)
 - “Conduct capable of causing nuisance or annoyance to a person in relation to that person’s occupation of residential premises or the conduct is capable of causing housing-related nuisance or annoyance to any person.” (p22)
 - “..activities carried out, or likely to be carried out, in a public place: have had, or are likely to have, a detrimental effect on the quality of life of those in the locality; is, or is likely to be, persistent or continuing in nature; and is, or is likely to be, unreasonable.” (p47)



Defining ASB

- Redditch Borough Council, Anti-Social Behaviour Statement of Policy & Procedures
 - “Anti-Social Behaviour covers any behaviour by an individual or group which makes another person or group feel harassed, alarmed, threatened or distressed.”
 - “It includes a variety of behaviour that can blight the quality of community life and is based on individual perception.”
 - “Anti-Social Behaviour may constitute a nuisance and annoyance, harassment or criminal activity.”



Measuring ASB

- Police National Incident Recording Standard
 - Nuisance – “causes trouble ...to the local community in general”
 - Personal – “... deliberately targeted at an individual or group...”
 - Environmental – “...have an impact on their surroundings...”
- Registered Social Housing Providers
 - “ASB or Nuisance Report Forms”



Incident types

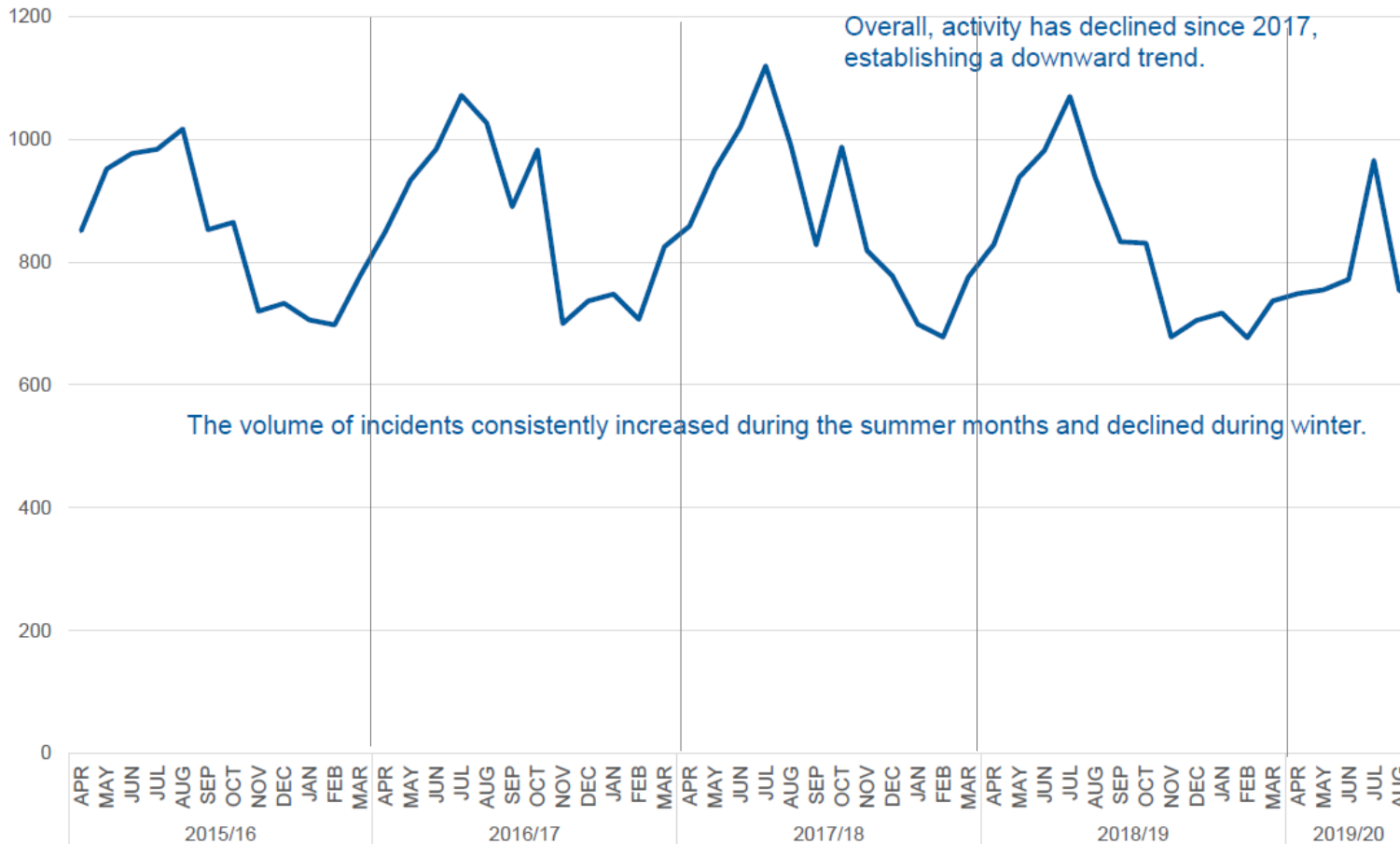
Antisocial Behaviour in North Worcestershire between 1 April 2017 to 31 March 2019

| Key Word description of incident | 2017 - 2019 | 2018 - 2019 | Mean | Mean Percentage |
|----------------------------------|-------------|-------------|------|-----------------|
| Other | 5426 | 5320 | 5373 | 53% |
| Youth related | 1715 | 1294 | 1505 | 15% |
| Neighbour Dispute | 1396 | 1447 | 1422 | 14% |
| Threats/ Harassment | 1096 | 1018 | 1057 | 10% |
| Fights/ Arguments | 593 | 641 | 617 | 6% |
| Parking | 162 | 120 | 141 | 1% |
| Begging | 114 | 36 | 75 | 1% |

Seasonal Patterns



Antisocial Behaviour in North Worcestershire between 1 April 2015 to 28 August 2019





Redditch Ward Patterns

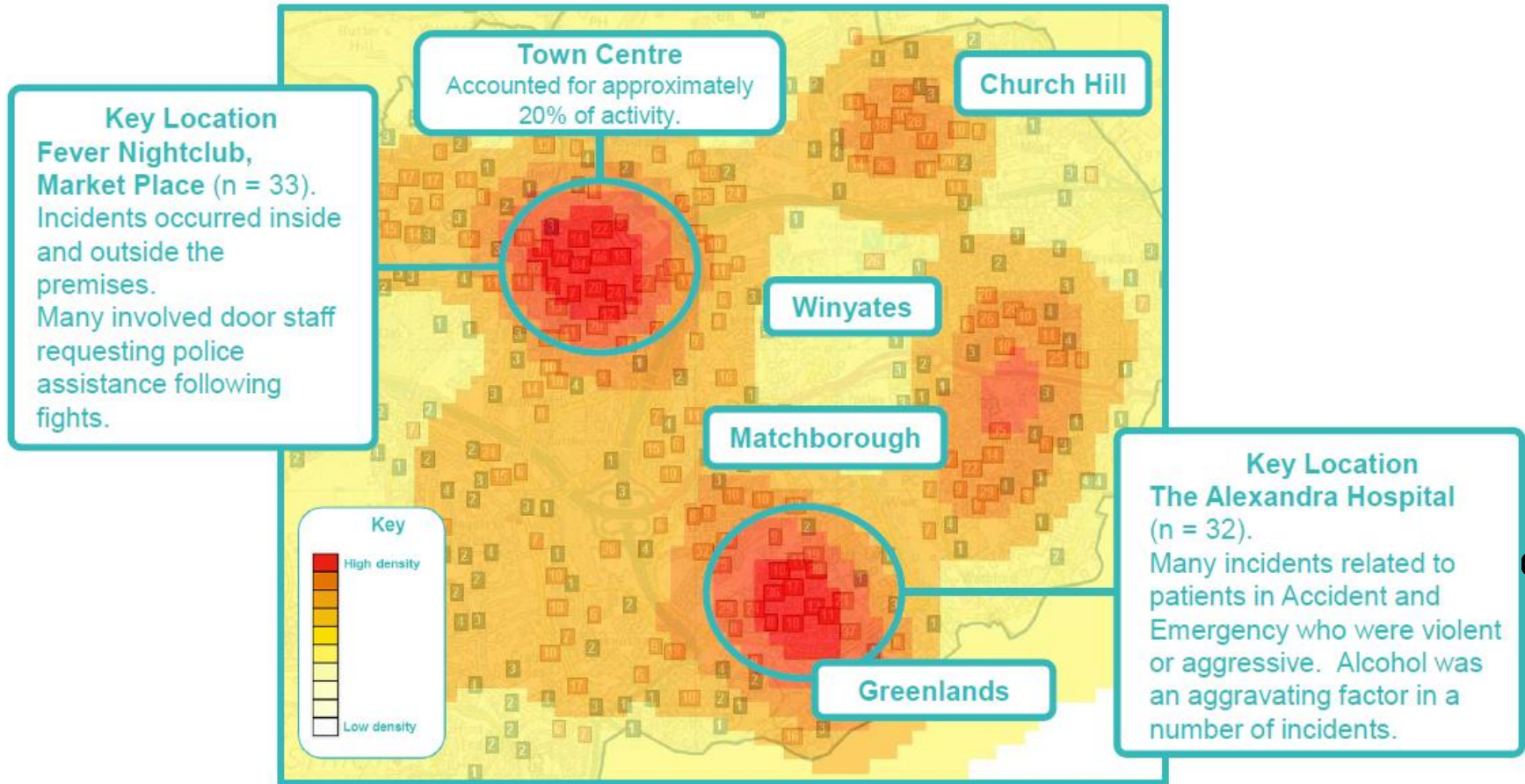
Antisocial Behaviour in Redditch between 1 April 2017 to 31 March 2019

| Ward | 2017 - 2018 | 2018 - 2019 | Difference | Percentage |
|------------------------------|-------------|-------------|-------------|------------|
| Abbey | 603 | 562 | -41 | -7% |
| Astwood Bank and Feckenham | 87 | 84 | -3 | -3% |
| Batchley and Brockhill | 391 | 309 | -82 | -21% |
| Central | 286 | 269 | -17 | -6% |
| Church Hill | 280 | 298 | 18 | 6% |
| Crabbs Cross | 91 | 107 | 16 | 18% |
| Greenlands | 572 | 550 | -22 | -4% |
| Headless Cross and Oakenshaw | 223 | 267 | 44 | 20% |
| Lodge Park | 200 | 207 | 7 | 4% |
| Matchborough | 286 | 203 | -83 | -29% |
| West | 100 | 91 | -9 | -9% |
| Winyates | 349 | 256 | -93 | -27% |
| Grand Total | 3468 | 3203 | -265 | -8% |

Where?

1 April 2018 to 31 March 2019

Clusters of activity were focused upon the town centre and residential areas with a higher density of population.

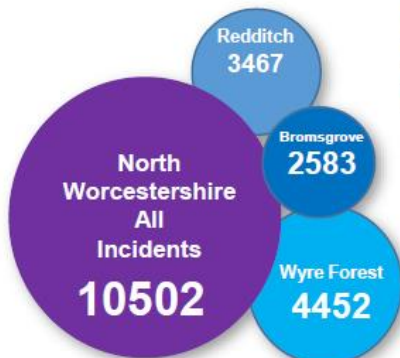


Adapted from North Worcestershire Community Safety Partnership Strategic Assessment, unpublished August 2019.



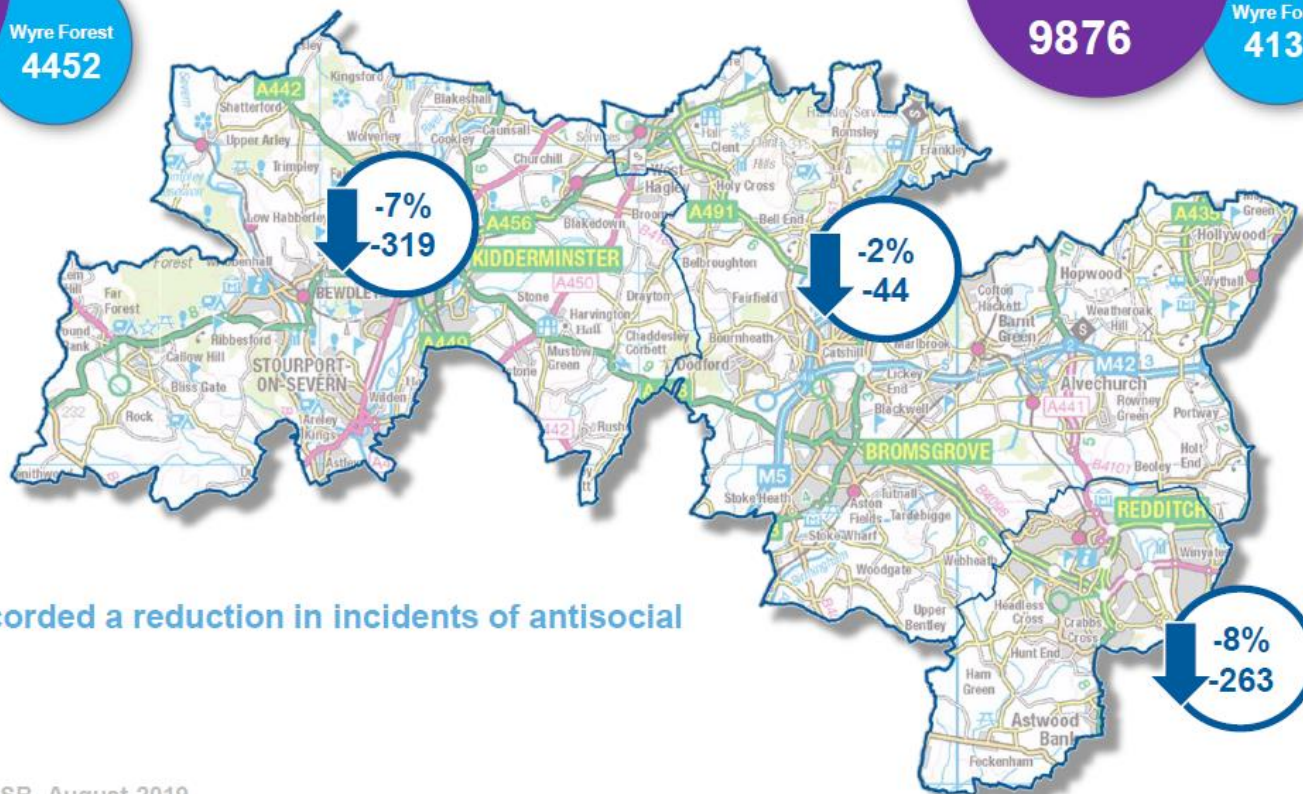
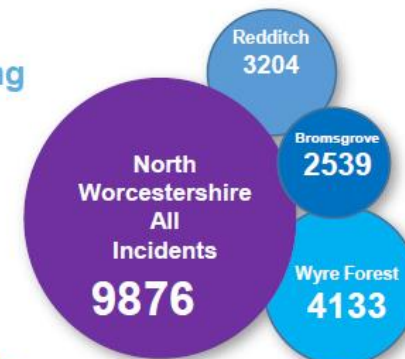
District Data

2017 to 2018



There were 6% fewer incidents of antisocial behaviour recorded across North Worcestershire between 1 April 2018 and 31 March 2019 than during the same period the previous year.

2018 to 2019



All districts recorded a reduction in incidents of antisocial behaviour.



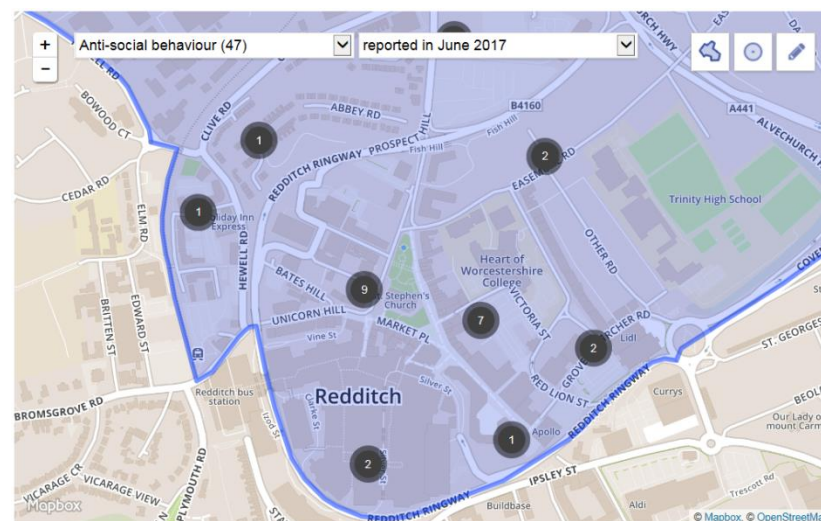
ASB Tools & Powers

- Partnership funded two day ASB & Environmental Crime training session delivered in Jun 2019. Further date planned in Nov, to be part funded by local Housing Assoc
- Cross service officer group established to implement a corporate approach to ASB enforcement
- To date 1 Community Protection Warning drafted but not issued as possession proceedings to be taken
- 5 Community Trigger applications received in Redditch to date – 4 completed, 1 in progress
- Development of multi-agency ASB and Complex Case group to address most serious and complex issues and concerns.



Find out more

User-friendly crime & ASB information can be found online at www.police.uk



Regular liaison and joint action with all CSP agencies coordinated by Redditch Community Safety Team – Tel: 01527 534187

communitysafety@bromsgroveandredditch.gov.uk



North Worcestershire Community Safety Partnership
c/o Redditch Town Hall, Walter Stranz Square, Redditch B98 8AH
Tel: 01527 534187
Email: communitysafety@bromsgroveandredditch.gov.uk
Website: <https://nwcsp.org/>

This page is intentionally left blank